



S-Tag rabbit pAb

Cat No.:ES12933

For research use only

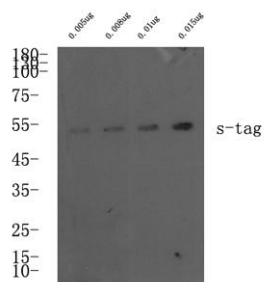
Overview

Product Name	S-Tag rabbit pAb
Host species	Rabbit
Applications	WB; ELISA
Species Cross-Reactivity	Species independent
Recommended dilutions	WB 1:1000-5000, ELISA(peptide)1:5000-20000
Immunogen	Synthetic peptide within S tag.
Specificity	Rabbit polyclonal to S tag
Formulation	Liquid in PBS containing 50% glycerol, 0.5% BSA and 0.02% sodium azide.
Storage	Store at -20°C. Avoid repeated freeze-thaw cycles.
Protein Name	S Tag
Gene Name	S Tag
Cellular localization	
Purification	The antibody was affinity-purified from rabbit antiserum by affinity-chromatography using epitope-specific immunogen.
Clonality	Polyclonal
Concentration	1 mg/ml
Observed band	
Human Gene ID	
Human Swiss-Prot Number	
Alternative Names	KETAAAKFERQHMDs tag antibody antibody S peptide antibody S peptide epitope tag antibody
Background	





ELK Biotechnology



Western blot analysis of S-Tag fusion protein at 0.05-0.15ug, 4° over night, secondary antibody(cat: RS0002) was diluted at 1:10000, 37° 1hour.



+86-27-59760950

ELKbio@ELKbiotech.com

www.elkbiotech.com

23-2, No.388 Gaoxin 2nd Road,Wuhan East Lake Hi-tech Development Zone, Hubei , P.R.C