

NM23A Rabbit rabbit pAb

Cat No.:ES20658

For research use only

Overview

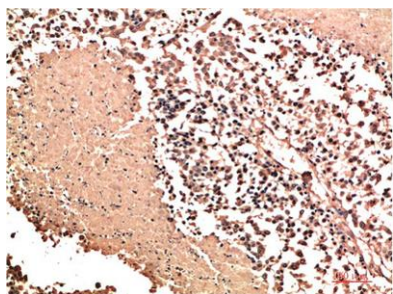
Product Name	NM23A Rabbit rabbit pAb
Host species	Rabbit
Applications	IHC;IF
Species Cross-Reactivity	Human;Rat;Mouse
Recommended dilutions	IHC 1:100-200
Immunogen	Recombinant Protein of NM23A of NME1
Specificity	NM23A protein detects endogenous levels of NME1
Formulation	Liquid in PBS containing 50% glycerol, 0.5% BSA and 0.02% sodium azide.
Storage	Store at -20°C. Avoid repeated freeze-thaw cycles.
Protein Name	NME1
Gene Name	NME1
Cellular localization	Cytoplasm . Nucleus . Cell-cycle dependent nuclear localization which can be induced by interaction with Epstein-barr viral proteins or by degradation of the SET complex by GzmA.
Purification	The antibody was affinity-purified from rabbit antiserum by affinity-chromatography using epitope-specific immunogen.
Clonality	Polyclonal
Concentration	1 mg/ml
Observed band	17kD
Human Gene ID	4830
Human Swiss-Prot Number	P15531
Alternative Names	NME1
Background	This gene (NME1) was identified because of its reduced mRNA transcript levels in highly metastatic cells. Nucleoside diphosphate kinase (NDK) exists as a hexamer composed of 'A' (encoded by this gene) and 'B' (encoded by NME2) isoforms. Mutations in this gene have been identified in aggressive neuroblastomas. Two transcript variants encoding different isoforms have been found for this gene.



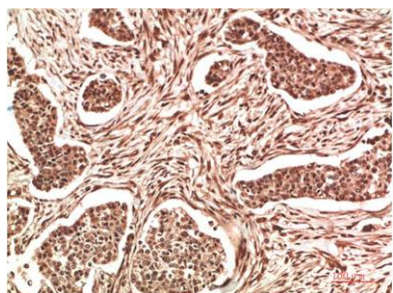


Co-transcription of this gene and the neighboring downstream gene (NME2) generates naturally-occurring transcripts (NME1-NME2), which encodes a fusion protein comprised of sequence sharing identity with each individual gene product. [provided by RefSeq, Jul 2008],

Immunohistochemical analysis of paraffin-embedded Human Lung Carcinoma Tissue using NM23A Rabbit pAb diluted at 1:500.



Immunohistochemical analysis of paraffin-embedded Human Stomach Carcinoma Tissue using NM23A Rabbit pAb diluted at 1:500.



Immunohistochemical analysis of paraffin-embedded Human Placenta Tissue using NM23A Rabbit pAb diluted at 1:500.

