

# CLIC1 rabbit pAb

Cat No.:ES20785

For research use only

## Overview

Product Name	CLIC1 rabbit pAb
Host species	Rabbit
Applications	IHC;IF
Species Cross-Reactivity	Human;Rat;Mouse
Recommended dilutions	IHC 1:100-200
Immunogen	Synthetic Peptide of CLIC1 AA range: 166-216
Specificity	CLIC1 protein(A216) detects endogenous levels of CLIC1
Formulation	Liquid in PBS containing 50% glycerol, 0.5% BSA and 0.02% sodium azide.
Storage	Store at -20°C. Avoid repeated freeze-thaw cycles.
Protein Name	Chloride intracellular channel protein 1 (Chloride channel ABP) (Nuclear chloride ion channel 27) (NCC27) (Regulatory nuclear chloride ion channel protein) (hRNCC)
Gene Name	CLIC1
Cellular localization	Nucleus . Nucleus membrane ; Single-pass membrane protein . Cytoplasm . Cell membrane ; Single-pass membrane protein . Mostly in the nucleus including in the nuclear membrane (PubMed:9139710, PubMed:12681486). Small amount in the cytoplasm and the plasma
Purification	The antibody was affinity-purified from rabbit antiserum by affinity-chromatography using epitope-specific immunogen.
Clonality	Polyclonal
Concentration	1 mg/ml
Observed band	30kD
Human Gene ID	1192
Human Swiss-Prot Number	O00299
Alternative Names	Chloride intracellular channel protein 1 (Chloride channel ABP;Nuclear chloride ion channel 27;NCC27;Regulatory nuclear chloride ion channel



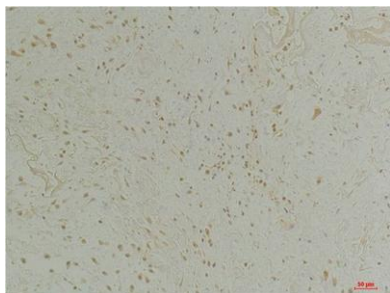


## Background

protein;hRNCC)

chloride intracellular channel 1 (CLIC1) Homo sapiens Chloride channels are a diverse group of proteins that regulate fundamental cellular processes including stabilization of cell membrane potential, transepithelial transport, maintenance of intracellular pH, and regulation of cell volume. Chloride intracellular channel 1 is a member of the p64 family; the protein localizes principally to the cell nucleus and exhibits both nuclear and plasma membrane chloride ion channel activity. [provided by RefSeq, Jul 2008],

Immunohistochemical analysis of paraffin-embedded Human Colon Tissue using CLIC1Rabbit pAb diluted at 1:200.



Immunohistochemical analysis of paraffin-embedded Human Kidney Tissue using CLIC1Rabbit pAb diluted at 1:200.

