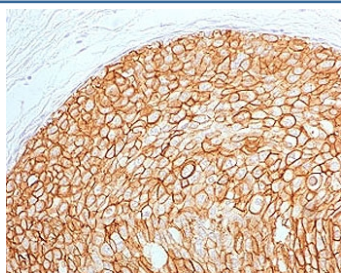


ErbB2 Antibody / HER2 [clone 2KR17-2] (V3835)

Catalog No.	Formulation	Size
V3835-100UG	0.2 mg/ml in 1X PBS with 0.1 mg/ml BSA (US sourced) and 0.05% sodium azide	100 ug
V3835-20UG	0.2 mg/ml in 1X PBS with 0.1 mg/ml BSA (US sourced) and 0.05% sodium azide	20 ug
V3835SAF-100UG	1 mg/ml in 1X PBS; BSA free, sodium azide free	100 ug

[Bulk quote request](#)

Species Reactivity	Human
Format	Purified
Host	Mouse
Clonality	Monoclonal (mouse origin)
Isotype	Mouse IgG2a, kappa
Clone Name	2KR17-2
Purity	Protein G affinity chromatography
UniProt	P04626
Localization	Cell membrane (This mAb binds to the extracellular/cell surface region of the protein)
Applications	Immunohistochemistry (FFPE) : 1-2ug/ml
Limitations	This ErbB2 antibody is available for research use only.



IHC testing of FFPE human breast carcinoma with ErbB2 antibody (clone 2KR17-2).
HIER: boil tissue sections in pH6, 10mM citrate buffer, for 10-20 min followed by cooling at RT for 20 min.

Description

HER2/ErbB2 is a member of the epidermal growth factor (EGF) receptor family of receptor tyrosine kinases. This protein has no ligand binding domain of its own and therefore cannot bind growth factors. However, it does bind tightly to other

ligand-bound EGF receptor family members to form a heterodimer, stabilizing ligand binding and enhancing kinase-mediated activation of downstream signalling pathways, such as those involving mitogen-activated protein kinase and phosphatidylinositol-3 kinase. Amplification and/or overexpression of this gene has been reported in numerous cancers, including breast and ovarian tumors. ErbB2 protein is over-expressed in a variety of carcinomas especially those of breast and ovary. [RefSeq]

Application Notes

The concentration stated for each application is a general starting point. Variations in protocols, secondaries and substrates may require the ErbB2 antibody to be titered up or down for optimal performance.

Immunogen

A portion of amino acids 311-462 from the human protein was used as the immunogen for this ErbB2 antibody.

Storage

Store the ErbB2 antibody at 2-8oC (with azide) or aliquot and store at -20oC or colder (without azide).