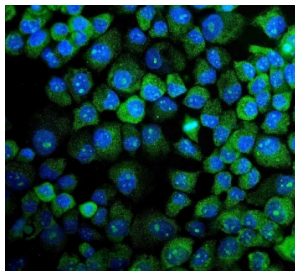


MAPK11 Antibody (RQ6107)

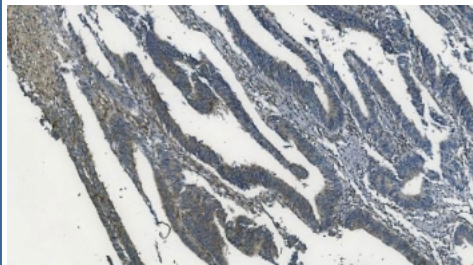
Catalog No.	Formulation	Size
RQ6107	0.5mg/ml if reconstituted with 0.2ml sterile DI water	100 ug

[Bulk quote request](#)

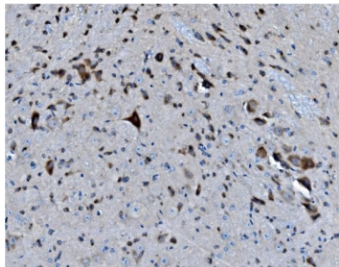
Availability	1-3 business days
Species Reactivity	Human, Mouse, Rat
Format	Antigen affinity purified
Host	Rabbit
Clonality	Polyclonal (rabbit origin)
Isotype	Rabbit IgG
Purity	Affinity purified
Buffer	Lyophilized from 1X PBS with 2% Trehalose and 0.025% sodium azide
UniProt	Q15759
Localization	Cytoplasmic, nuclear
Applications	Western Blot : 1-2ug/ml Immunohistochemistry (FFPE) : 2-5ug/ml Immunofluorescence : 5ug/ml Flow Cytometry : 1-3ug/million cells Direct ELISA : 0.1-0.5ug/ml
Limitations	This MAPK11 antibody is available for research use only.



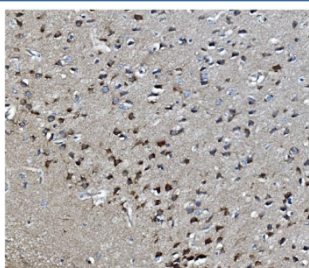
Immunofluorescent staining of FFPE human A431 cells with MAPK11 antibody (green) and DAPI nuclear stain (blue). HIER: steam section in pH6 citrate buffer for 20 min.



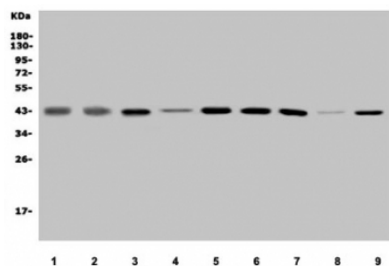
IHC staining of FFPE human rectal cancer with MAPK11 antibody. HIER: boil tissue sections in pH8 EDTA for 20 min and allow to cool before testing.



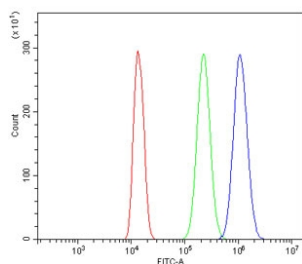
IHC staining of FFPE mouse brain with MAPK11 antibody. HIER: boil tissue sections in pH8 EDTA for 20 min and allow to cool before testing.



IHC staining of FFPE rat brain with MAPK11 antibody. HIER: boil tissue sections in pH8 EDTA for 20 min and allow to cool before testing.



Western blot testing of human 1) placenta, 2) SH-SY5Y, 3) T47-D, 4) MCF7, 5) U-87 MG, 6) HeLa, 7) K562, 8) rat lung and 9) mouse lung lysate with MAPK11 antibody. Predicted molecular weight ~41 kDa.



Flow cytometry testing of human ThP1 cells with MAPK11 antibody at 1ug/million cells (blocked with goat sera); Red=cells alone, Green=isotype control, Blue= MAPK11 antibody.

Description

Mitogen-activated protein kinase 11 is an enzyme that in humans is encoded by the MAPK11 gene. This gene encodes a member of a family of protein kinases that are involved in the integration of biochemical signals for a wide variety of cellular processes, including cell proliferation, differentiation, transcriptional regulation, and development. The encoded protein can be activated by proinflammatory cytokines and environmental stresses through phosphorylation by mitogen activated protein kinase kinases (MKKs). Alternative splicing results in multiple transcript variants.

Application Notes

Optimal dilution of the MAPK11 antibody should be determined by the researcher.

Immunogen

A human recombinant partial protein (amino acids D230-Q364) was used as the immunogen for the MAPK11 antibody.

Storage

After reconstitution, the MAPK11 antibody can be stored for up to one month at 4°C. For long-term, aliquot and store at -20°C. Avoid repeated freezing and thawing.