

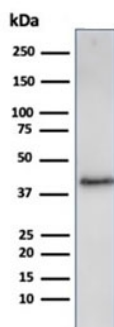
## Recombinant Filaggrin Antibody [clone FLG/3909R] (V9401)

Catalog No.	Formulation	Size
V9401-100UG	0.2 mg/ml in 1X PBS with 0.1 mg/ml BSA (US sourced), 0.05% sodium azide	100 ug
V9401-20UG	0.2 mg/ml in 1X PBS with 0.1 mg/ml BSA (US sourced), 0.05% sodium azide	20 ug
V9401SAF-100UG	1 mg/ml in 1X PBS; BSA free, sodium azide free	100 ug

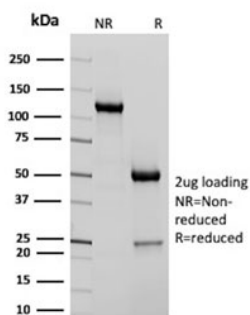
Recombinant **RABBIT MONOCLONAL**

[Bulk quote request](#)

Availability	1-3 business days
Species Reactivity	Human
Format	Purified
Clonality	Recombinant Rabbit Monoclonal
Isotype	Rabbit IgG
Clone Name	FLG/3909R
Purity	Protein A/G affinity
UniProt	P20930
Localization	Cytoplasm
Applications	Western blot : 2-4ug/ml
Limitations	This recombinant Filaggrin antibody is available for research use only.



Western blot analysis of human A431 cell lysate using recombinant Filaggrin antibody (clone FLG/3909R). Expected molecular weight: ~434 kDa (precursor); 37-45 kDa (processed).



SDS-PAGE analysis of purified, BSA-free recombinant Filaggrin antibody (clone FLG/3909R) as confirmation of integrity and purity.

## Description

Filaggrin is an intermediate filament-associated protein that aggregates keratin intermediate filaments in mammalian epidermis. It is initially synthesized as a polyprotein precursor, profilaggrin (consisting of multiple filaggrin units of 324 aa each), which is localized in keratohyalin granules, and is subsequently proteolytically processed into individual functional filaggrin molecules. Active filaggrin is present at a level of the epidermis where keratinocytes are in transition between the live nucleated granular layer and the anucleate cornified layer, suggesting that filaggrin aids in the terminal differentiation process by facilitating apoptotic machinery.

## Application Notes

Optimal dilution of the recombinant Filaggrin antibody should be determined by the researcher.

## Immunogen

A portion of amino acids 198-288 was used as the immunogen for the recombinant Filaggrin antibody.

## Storage

Aliquot the recombinant Filaggrin antibody and store frozen at -20oC or colder. Avoid repeated freeze-thaw cycles.