

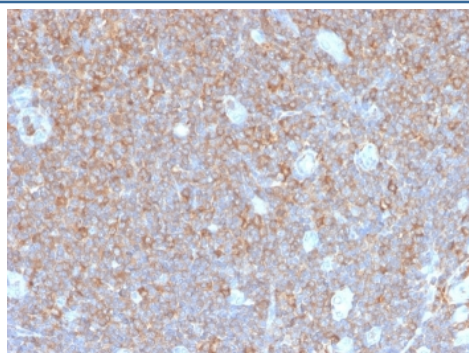
## Recombinant PARVG Antibody / Gamma Parvin [clone PARVG/6312R] (V9269)

Catalog No.	Formulation	Size
V9269-100UG	0.2 mg/ml in 1X PBS with 0.1 mg/ml BSA (US sourced), 0.05% sodium azide	100 ug
V9269-20UG	0.2 mg/ml in 1X PBS with 0.1 mg/ml BSA (US sourced), 0.05% sodium azide	20 ug
V9269SAF-100UG	1 mg/ml in 1X PBS; BSA free, sodium azide free	100 ug

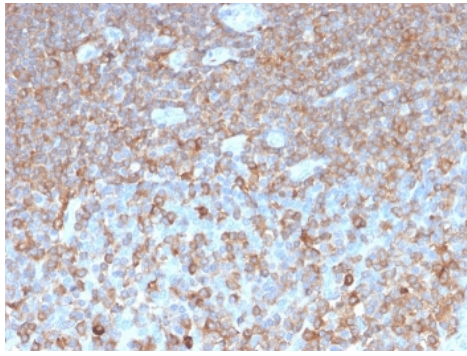
Recombinant **RABBIT MONOCLONAL**

[Bulk quote request](#)

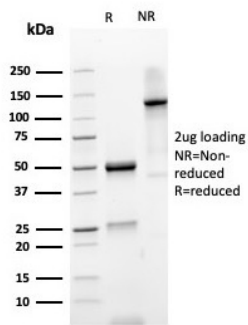
Availability	1-3 business days
Species Reactivity	Human
Format	Purified
Clonality	Recombinant Rabbit Monoclonal
Isotype	Rabbit IgG
Clone Name	PARVG/6312R
Purity	Protein A/G affinity
UniProt	Q9HBI0
Localization	Cytoplasm, Cell Surface
Applications	Immunohistochemistry (FFPE) : 1-2ug/ml
Limitations	This recombinant PARVG antibody is available for research use only.



IHC staining of FFPE human tonsil tissue with recombinant PARVG antibody (clone PARVG/6312R). HIER: boil tissue sections in pH 9 10mM Tris with 1mM EDTA for 20 min and allow to cool before testing.



IHC staining of FFPE human tonsil tissue with recombinant PARVG antibody (clone PARVG/6312R). HIER: boil tissue sections in pH 9 10mM Tris with 1mM EDTA for 20 min and allow to cool before testing.



SDS-PAGE analysis of purified, BSA-free recombinant PARVG antibody (clone PARVG/6312R) as confirmation of integrity and purity.

## Description

Gamma-parvin likely plays a role in the regulation of cell adhesion and cytoskeleton organization. [UniProt]

## Application Notes

Optimal dilution of the recombinant PARVG antibody should be determined by the researcher.

## Immunogen

GST-tagged recombinant protein corresponding to human Gamma-parvin was used as the immunogen for the recombinant PARVG antibody.

## Storage

Aliquot the recombinant PARVG antibody and store frozen at -20°C or colder. Avoid repeated freeze-thaw cycles.