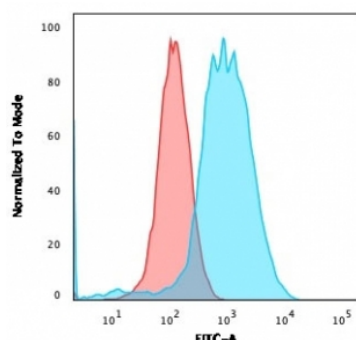


## Estrogen Receptor alpha Antibody [clone ESR1/3559] (V7751)

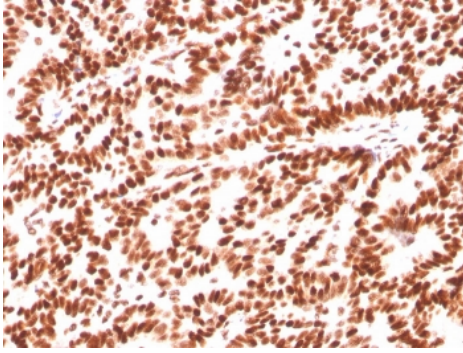
Catalog No.	Formulation	Size
V7751-100UG	0.2 mg/ml in 1X PBS with 0.1 mg/ml BSA (US sourced) and 0.05% sodium azide	100 ug
V7751-20UG	0.2 mg/ml in 1X PBS with 0.1 mg/ml BSA (US sourced) and 0.05% sodium azide	20 ug
V7751SAF-100UG	1 mg/ml in 1X PBS; BSA free, sodium azide free	100 ug

[Bulk quote request](#)

Availability	1-3 business days
Species Reactivity	Human
Format	Purified
Clonality	Monoclonal (mouse origin)
Isotype	Mouse IgG2b, kappa
Clone Name	ESR1/3559
Purity	Protein G affinity chromatography
UniProt	P03372
Localization	Nuclear
Applications	Flow cytometry : 1-2ug/10 <sup>6</sup> cells in 0.1ml Immunohistochemistry (FFPE) : 1-2ug/ml Western blot : 2-4ug/ml
Limitations	This Estrogen Receptor alpha antibody is available for research use only.

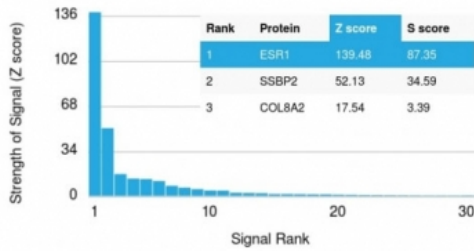


Flow cytometry testing of permeabilized human MCF7 cells with Estrogen Receptor alpha antibody (clone ESR1/3559); Red=isotype control, Blue= Estrogen Receptor alpha antibody.



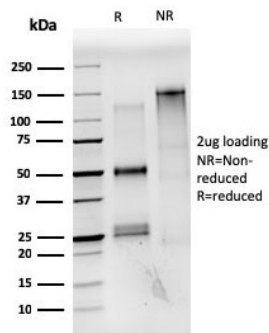
IHC staining of FFPE human breast carcinoma with Estrogen Receptor alpha antibody (clone ESR1/3559). HIER: boil tissue sections in pH 9 10mM Tris with 1mM EDTA for 10-20 min and allow to cool before testing.

#### Human Protein Microarray Specificity Validation

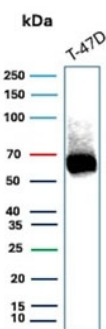


Analysis of HuProt(TM) microarray containing more than 19,000 full-length human proteins using Estrogen Receptor alpha antibody (clone ESR1/3559). These results demonstrate the foremost specificity of the ESR1/3559 mAb.

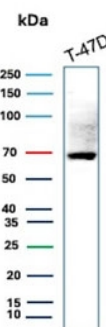
Z- and S- score: The Z-score represents the strength of a signal that an antibody (in combination with a fluorescently-tagged anti-IgG secondary Ab) produces when binding to a particular protein on the HuProt(TM) array. Z-scores are described in units of standard deviations (SD's) above the mean value of all signals generated on that array. If the targets on the HuProt(TM) are arranged in descending order of the Z-score, the S-score is the difference (also in units of SD's) between the Z-scores. The S-score therefore represents the relative target specificity of an Ab to its intended target.



SDS-PAGE analysis of purified, BSA-free Estrogen Receptor alpha antibody (clone ESR1/3559) as confirmation of integrity and purity.



Western blot testing of human T-47D cell lysate with Estrogen Receptor antibody (ESR1/3559). Predicted molecular weight ~67 kDa.



Western blot testing of human T-47D cell lysate with Estrogen Receptor antibody (ESR1/3559). Predicted molecular weight ~67 kDa.

## Description

This monoclonal antibody is specific to estrogen receptor alpha (ER alpha) and shows minimal cross-reaction with other members of the family. ER is an important regulator of growth and differentiation in the mammary gland. Presence of ER in breast tumors indicates an increased likelihood of response to anti-estrogen (e.g. tamoxifen) therapy. It strongly stains nuclei of epithelial cells in breast carcinomas.

## Application Notes

Optimal dilution of the Estrogen Receptor alpha antibody should be determined by the researcher.

## Immunogen

A recombinant human partial protein (amino acids 129-312) was used as the immunogen for this Estrogen Receptor alpha antibody.

## Storage

Store the Estrogen Receptor alpha antibody at 2-8oC (with azide) or aliquot and store at -20oC or colder (without azide).