

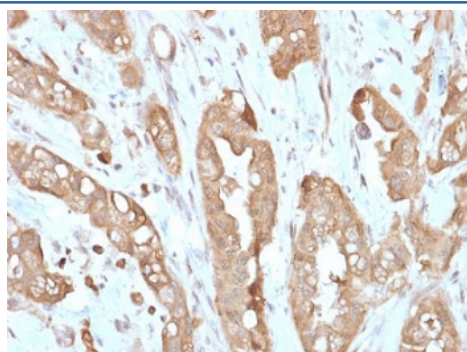
## Recombinant Villin Antibody / VIL1 [clone VIL1/2310R] (V7497)

Catalog No.	Formulation	Size
V7497-100UG	0.2 mg/ml in 1X PBS with 0.1 mg/ml BSA (US sourced) and 0.05% sodium azide	100 ug
V7497-20UG	0.2 mg/ml in 1X PBS with 0.1 mg/ml BSA (US sourced) and 0.05% sodium azide	20 ug
V7497SAF-100UG	1 mg/ml in 1X PBS; BSA free, sodium azide free	100 ug
V7497IHC-7ML	Prediluted in 1X PBS with 0.1 mg/ml BSA (US sourced) and 0.05% sodium azide; *For IHC use only*	7 ml

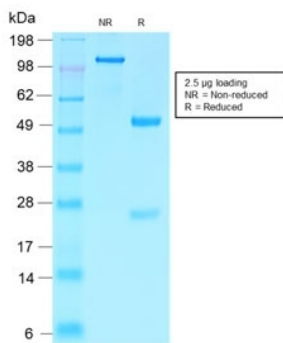
Recombinant **RABBIT MONOCLONAL**

[Bulk quote request](#)

<b>Species Reactivity</b>	Human
<b>Format</b>	Purified
<b>Clonality</b>	Recombinant Rabbit Monoclonal
<b>Isotype</b>	Rabbit IgG, kappa
<b>Clone Name</b>	VIL1/2310R
<b>Purity</b>	Protein A affinity chromatography
<b>UniProt</b>	P09327
<b>Localization</b>	Cytoplasmic and cell surface
<b>Applications</b>	Immunohistochemistry (FFPE) : 0.5-1ug/ml for 30 min at RT
<b>Limitations</b>	This recombinant Villin antibody is available for research use only.



IHC testing of FFPE human small intestine with recombinant Villin antibody (clone VIL1/2310R). Required HIER: boil tissue sections in 10mM citrate buffer, pH 6, for 10-20 min followed by cooling at RT for 20 min.



SDS-PAGE analysis of purified, BSA-free recombinant Villin antibody (clone VIL1/2310R) as confirmation of integrity and purity.

## Description

Recognizes a protein of 95kDa, which is identified as villin. It is a major constituent in the microvilli, which compose the brush border of epithelial cells forming absorptive surfaces of the intestinal and renal proximal tubular epithelia. Anti-Villin labels the brush border area in the gastrointestinal mucosal epithelium and urogenital tract. Among neoplasms, villin is predominantly expressed in tumors of colorectal origin. Antibody to villin is useful in identifying malignant cells from primary and metastatic colorectal carcinomas. This antibody also labels Merkel cells of the skin.

## Application Notes

The stated application concentrations are suggested starting points. Titration of the recombinant Villin antibody may be required due to differences in protocols and secondary/substrate sensitivity.

1. The prediluted format is supplied in a dropper bottle and is optimized for use in IHC. After epitope retrieval step (if required), drip mAb solution onto the tissue section and incubate at RT for 30 min.

## Immunogen

Amino acids 179-311 from the human protein were used as the immunogen for this recombinant Villin antibody.

## Storage

Store the recombinant Villin antibody at 2-8°C (with azide) or aliquot and store at -20°C or colder (without azide).