

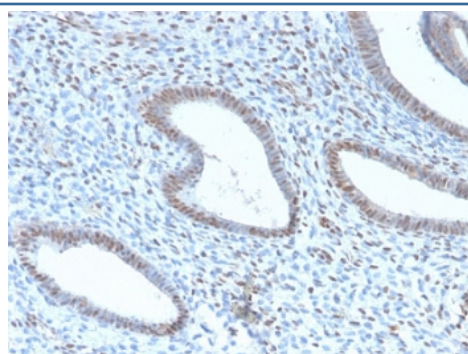
Recombinant TLE1 Antibody / Transducin-like enhancer protein 1 [clone TLE1/2946R] (V7357)

| Catalog No. | Formulation | Size |
|----------------|--|--------|
| V7357-100UG | 0.2 mg/ml in 1X PBS with 0.1 mg/ml BSA (US sourced) and 0.05% sodium azide | 100 ug |
| V7357-20UG | 0.2 mg/ml in 1X PBS with 0.1 mg/ml BSA (US sourced) and 0.05% sodium azide | 20 ug |
| V7357SAF-100UG | 1 mg/ml in 1X PBS; BSA free, sodium azide free | 100 ug |

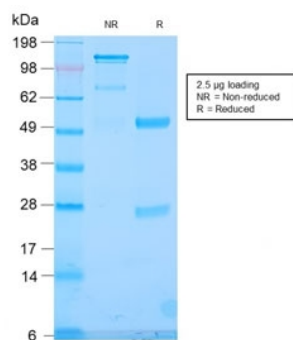
Recombinant **RABBIT MONOCLONAL**

[Bulk quote request](#)

| | |
|--------------------|--|
| Availability | 1-3 business days |
| Species Reactivity | Human |
| Format | Purified |
| Clonality | Recombinant Rabbit Monoclonal |
| Isotype | Rabbit IgG, kappa |
| Clone Name | TLE1/2946R |
| Purity | Protein A affinity chromatography |
| UniProt | Q04724 |
| Localization | Nuclear |
| Applications | Immunohistochemistry (FFPE) : 1-2ug/ml for 30 min at RT |
| Limitations | This recombinant TLE1 antibody is available for research use only. |



IHC testing of FFPE human endometrial carcinoma with recombinant TLE1 antibody (clone TLE1/2946R). Required HIER: boil tissue sections in pH 9 10mM Tris with 1mM EDTA for 10-20 min and allow to cool before testing.



SDS-PAGE analysis of purified, BSA-free recombinant TLE1 antibody (clone TLE1/2946R) as confirmation of integrity and purity.

Description

Key players in the Notch pathway are the TLE genes, which are human homologs of the *Drosophila* groucho gene. Groucho is a transcriptional repressor that plays a key role in neurogenesis, segmentation and sex determination. Transducin-like enhancer protein 1 (TLE1) is a protein that is encoded by the TLE1 gene and is involved in control of hematopoiesis, neuronal, and terminal epithelial differentiation. Positive immunohistochemical nuclear staining with anti-TLE-1 has been shown to be a useful addition to an IHC panel when differentiating synovial sarcoma from other soft tissue malignancies.

Application Notes

Optimal dilution of the recombinant TLE1 antibody should be determined by the researcher.

Immunogen

A portion of amino acids 175-338 from the human protein was used as the immunogen for the recombinant TLE1 antibody.

Storage

Store the recombinant TLE1 antibody at 2-8°C (with azide) or aliquot and store at -20°C or colder (without azide).