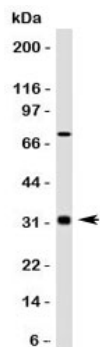


Bcl10 Antibody [clone MUBC10] (V7088)

Catalog No.	Formulation	Size
V7088-100UG	0.2 mg/ml in 1X PBS with 0.1 mg/ml BSA (US sourced) and 0.05% sodium azide	100 ug
V7088-20UG	0.2 mg/ml in 1X PBS with 0.1 mg/ml BSA (US sourced) and 0.05% sodium azide	20 ug
V7088SAF-100UG	1 mg/ml in 1X PBS; BSA free, sodium azide free	100 ug
V7088IHC-7ML	Prediluted in 1X PBS with 0.1 mg/ml BSA (US sourced) and 0.05% sodium azide; *For IHC use only*	7 ml

[Bulk quote request](#)

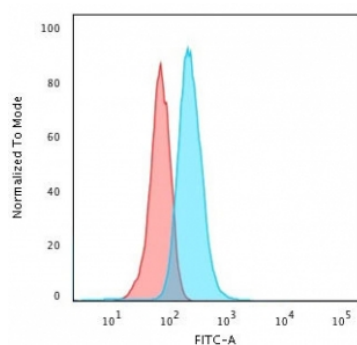
Species Reactivity	Human
Format	Purified
Clonality	Monoclonal (mouse origin)
Isotype	Mouse IgG1, kappa
Clone Name	MUBC10
Purity	Protein G affinity chromatography
Gene ID	8915
Localization	Nuclear and cytoplasmic
Applications	Flow cytometry : 1-2ug/10 ⁶ cells Western blot : 1-2ug/ml Immunohistochemistry (FFPE) : 1-2ug/ml for 30 min at RT Prediluted IHC only format : incubate for 30 min at RT (1)
Limitations	This Bcl10 antibody is available for research use only.



Western blot testing of Bcl10 antibody (clone MUBC10) and HepG2 lysate. Observed molecular weight: 26~33 kDa.



IHC staining of human tonsil with Bcl10 antibody (clone MUBC10). Required HIER: boil tissue sections in pH 9 10mM Tris with 1mM EDTA for 10-20 min.



Flow cytometry testing of PFA-fixed human K562 cells with Bcl10 antibody (clone MUBC10); Red=isotype control, Blue= Bcl10 antibody.

Description

Bcl10, with an N-terminal caspase recruitment domain (CARD), is found in a number of apoptotic regulatory molecules.

Immunogen

Human recombinant protein was used as the immunogen for this Bcl10 antibody.

Storage

Store the Bcl10 antibody at 2-8°C (with azide) or aliquot and store at -20°C or colder (without azide).