

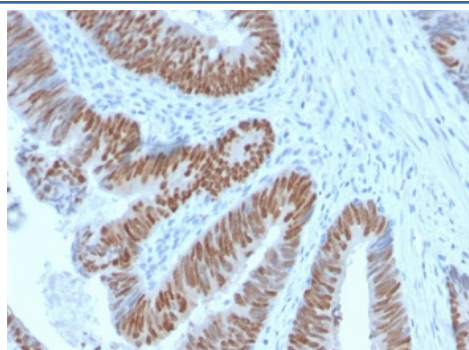
Recombinant CDX2 Antibody [clone CDX2/2951R] (V3964)

Catalog No.	Formulation	Size
V3964-100UG	0.2 mg/ml in 1X PBS with 0.1 mg/ml BSA (US sourced) and 0.05% sodium azide	100 ug
V3964-20UG	0.2 mg/ml in 1X PBS with 0.1 mg/ml BSA (US sourced) and 0.05% sodium azide	20 ug
V3964SAF-100UG	1 mg/ml in 1X PBS; BSA free, sodium azide free	100 ug
V3964IHC-7ML	Prediluted in 1X PBS with 0.1 mg/ml BSA (US sourced) and 0.05% sodium azide; *For IHC use only*	7 ml

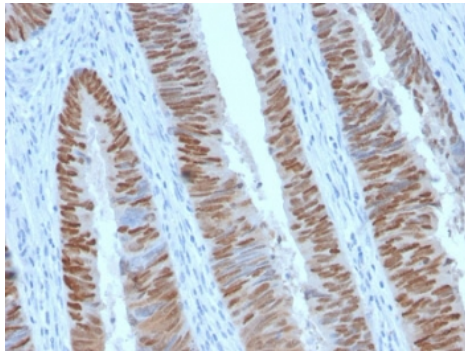
Recombinant **RABBIT MONOCLONAL**

[Bulk quote request](#)

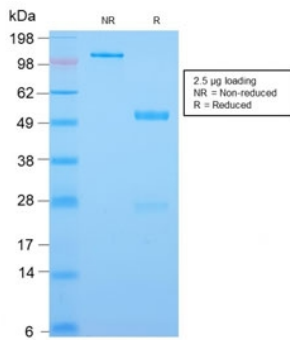
Species Reactivity	Human
Format	Purified
Clonality	Recombinant Rabbit Monoclonal
Isotype	Rabbit IgG, kappa
Clone Name	CDX2/2951R
Purity	Protein A affinity chromatography
UniProt	Q99626
Localization	Nuclear
Applications	ELISA : 2-4ug/ml (order BSA/azide-free format) Immunohistochemistry (FFPE) : 1-2ug/ml for 30 min at RT
Limitations	This recombinant CDX2 antibody is available for research use only.



IHC testing of FFPE human colon carcinoma with recombinant CDX2 antibody (clone CDX2/2951R). HIER: boil tissue sections in 10mM Tris with 1mM EDTA, pH 9, for 10-20 min followed by cooling prior to testing.



IHC testing of FFPE human colon carcinoma with recombinant CDX2 antibody (clone CDX2/2951R). HIER: boil tissue sections in 10mM Tris with 1mM EDTA, pH 9, for 10-20 min followed by cooling prior to testing.



SDS-PAGE analysis of purified, BSA-free recombinant CDX2 antibody (clone CDX2/2951R) as confirmation of integrity and purity.

Description

The intestine-specific transcription factors CDX1 and CDX2 are important for directing intestinal development, differentiation, proliferation and maintenance of the intestinal phenotype. CDX2 protein expression has been seen in GI carcinomas. Anti-CDX2 has been useful to establish GI origin of metastatic adenocarcinomas and carcinoids and is especially useful to distinguish metastatic colorectal adenocarcinoma from lung adenocarcinoma. However, mucinous carcinomas of the ovary also express CDX2 protein. It limits the usefulness of this marker in the distinction of metastatic colorectal adenocarcinoma from mucinous carcinoma of the ovary.

Application Notes

The concentration stated for each application is a general starting point. Variations in protocols, secondaries and substrates may require the recombinant CDX2 antibody to be titrated up or down for optimal performance.

1. The prediluted format is supplied in a dropper bottle and is optimized for use in IHC. After epitope retrieval step (if required), drip mAb solution onto the tissue section and incubate at RT for 30 min.

Immunogen

Amino acids 150-249 from the human protein were used as the immunogen for this recombinant CDX2 antibody.

Storage

Store the recombinant CDX2 antibody at 2-8°C (with azide) or aliquot and store at -20°C or colder (without azide).

