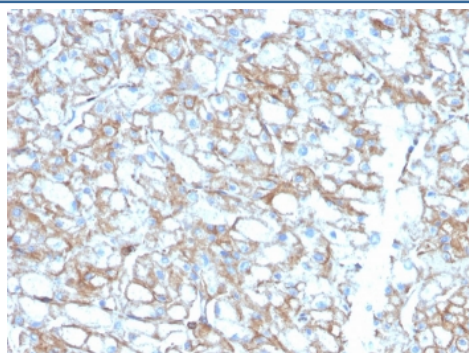


PD-L1 Antibody [clone PDL1/2746] (V3955BTN)

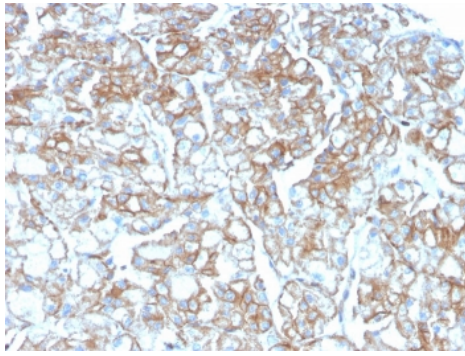
Catalog No.	Formulation	Size
V3955BTN	0.1 mg/ml with 0.1 mg/ml BSA (US sourced), 0.05% sodium azide	500 ul

Bulk quote request

Availability	1-3 business days
Species Reactivity	Human
Format	Biotin Conjugate
Clonality	Monoclonal (mouse origin)
Isotype	Mouse IgG2b, kappa
Clone Name	PDL1/2746
Purity	Protein G affinity chromatography
UniProt	Q9NZQ7
Localization	Cell surface, cytoplasmic
Applications	Flow cytometry : 1-2ug/million cells Immunofluorescence : 1-2ug/ml Western blot : 1-2ug/ml Immunohistochemistry (FFPE) : 1-2ug/ml at RT
Limitations	This PD-L1 antibody is available for research use only.

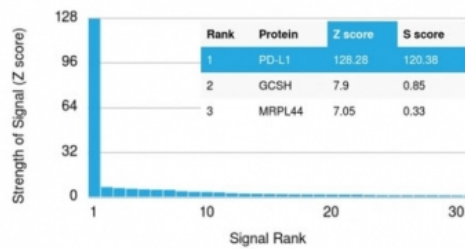


IHC testing of FFPE lung carcinoma with biotin-conjugated PD-L1 antibody (clone PDL1/2746). HIER: boil tissue sections in pH 9 10mM Tris with 1mM EDTA for 10-20 min followed by cooling at RT for 20 min.

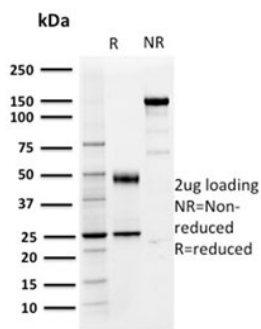


IHC testing of FFPE lung carcinoma with biotin-conjugated PD-L1 antibody (clone PDL1/2746). HIER: boil tissue sections in pH 9 10mM Tris with 1mM EDTA for 10-20 min followed by cooling at RT for 20 min.

Human Protein Microarray Specificity Validation



Analysis of HuProt(TM) microarray containing more than 19,000 full-length human proteins using PD-L1 antibody (clone PDL1/2746). These results demonstrate the foremost specificity of the PDL1/2746 mAb. Z- and S- score: The Z-score represents the strength of a signal that an antibody (in combination with a fluorescently-tagged anti-IgG secondary Ab) produces when binding to a particular protein on the HuProt(TM) array. Z-scores are described in units of standard deviations (SD's) above the mean value of all signals generated on that array. If the targets on the HuProt(TM) are arranged in descending order of the Z-score, the S-score is the difference (also in units of SD's) between the Z-scores. The S-score therefore represents the relative target specificity of an Ab to its intended target.



SDS-PAGE analysis of purified, BSA-free PD-L1 antibody (clone PDL1/2746) as confirmation of integrity and purity.

Description

PD-L1 is a checkpoint regulator in immune cells, it is expressed on immune or non-hematopoietic cells. Expression of the protein is seen during pregnancy where it has a role in suppressing the immune system. PD-L1 induces an inhibitory signal in activated T-cells and promotes T-cell apoptosis. It is overexpressed in a number of different cancers where it is believed to play a significant role in the cancer's ability to evade the immune system.

Application Notes

Optimal dilution of the PD-L1 antibody should be determined by the researcher.

Immunogen

A portion of amino acids 39-191 from the human protein was used as the immunogen for the PD-L1 antibody.

Storage

Store the PD-L1 antibody at 2-8°C (up to one month) or aliquot and store at -20°C (longer term).

