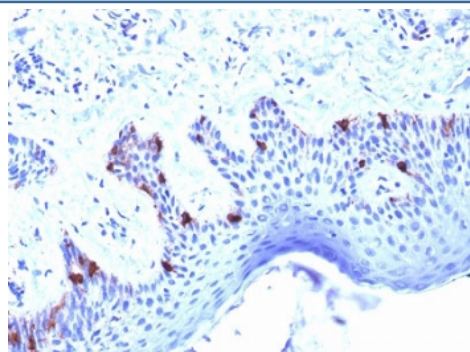


## Melanoma gp100 Antibody / PMEL17 [clone PMEL/2039] (V3929)

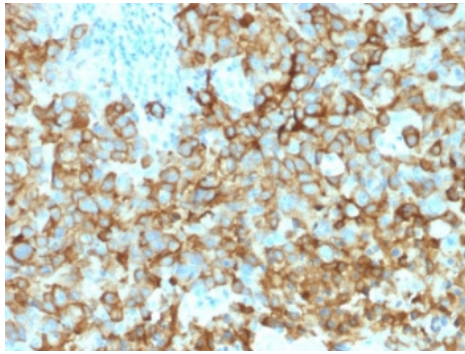
Catalog No.	Formulation	Size
V3929-100UG	0.2 mg/ml in 1X PBS with 0.1 mg/ml BSA (US sourced) and 0.05% sodium azide	100 ug
V3929-20UG	0.2 mg/ml in 1X PBS with 0.1 mg/ml BSA (US sourced) and 0.05% sodium azide	20 ug
V3929SAF-100UG	1 mg/ml in 1X PBS; BSA free, sodium azide free	100 ug

### Bulk quote request

<b>Availability</b>	1-3 business days
<b>Species Reactivity</b>	Human
<b>Format</b>	Purified
<b>Clonality</b>	Monoclonal (mouse origin)
<b>Isotype</b>	Mouse IgG1, kappa
<b>Clone Name</b>	PMEL/2039
<b>Purity</b>	Protein G affinity chromatography
<b>UniProt</b>	P40967
<b>Localization</b>	Cytoplasmic
<b>Applications</b>	ELISA : 2-4ug/ml (order BSA/azide-free format) Immunohistochemistry (FFPE) : 1-2ug/ml for 30 min at RT Western blot : 1-2ug/ml
<b>Limitations</b>	This Melanoma gp100 antibody is available for research use only.

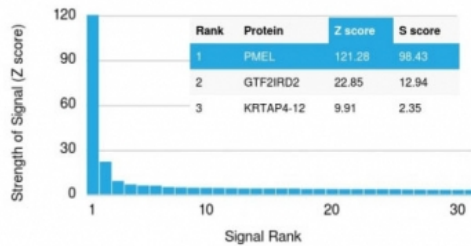


IHC testing of human skin with Melanoma gp100 antibody (clone PMEL/2039). Required HIER: boil tissue sections in 10mM citrate buffer, pH 6, for 10-20 min followed by cooling at RT for 20 min.



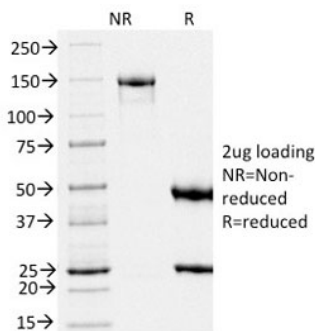
IHC testing of human melanoma with Melanoma gp100 antibody (clone PMEL/2039). Required HIER: boil tissue sections in 10mM citrate buffer, pH 6, for 10-20 min followed by cooling at RT for 20 min.

#### Human Protein Microarray Specificity Validation

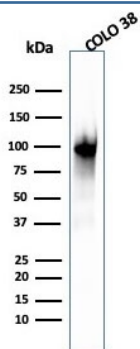


Analysis of HuProt(TM) microarray containing more than 19,000 full-length human proteins using Melanoma gp100 antibody (clone PMEL/2039). These results demonstrate the foremost specificity of the PMEL/2039 mAb.

Z- and S- score: The Z-score represents the strength of a signal that an antibody (in combination with a fluorescently-tagged anti-IgG secondary Ab) produces when binding to a particular protein on the HuProt(TM) array. Z-scores are described in units of standard deviations (SD's) above the mean value of all signals generated on that array. If the targets on the HuProt(TM) are arranged in descending order of the Z-score, the S-score is the difference (also in units of SD's) between the Z-scores. The S-score therefore represents the relative target specificity of an Ab to its intended target.



SDS-PAGE analysis of purified, BSA-free Melanoma gp100 antibody (clone PMEL/2039) as confirmation of integrity and purity.



Western blot testing of human COLO-38 cell lysate with PMEL17 antibody (clone PMEL/2039).

## Application Notes

Optimal dilution of the Melanoma gp100 antibody should be determined by the researcher.

## Immunogen

A portion of amino acids 376-502 from the human protein was used as the immunogen for the Melanoma gp100 antibody.

## Storage

Store the Melanoma gp100 antibody at 2-8oC (with azide) or aliquot and store at -20oC or colder (without azide).

Ordering:Phone:858.663.9055 | Fax:1.267.821.0800 | Email:[info@nsjbio.com](mailto:info@nsjbio.com)

Copyright © NSJ Bioreagents. All rights reserved