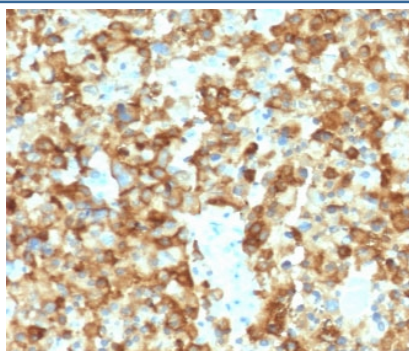


## Melanoma gp100 Antibody / PMEL17 [clone MSSG95-2] (V3916)

Catalog No.	Formulation	Size
V3916-100UG	0.2 mg/ml in 1X PBS with 0.1 mg/ml BSA (US sourced) and 0.05% sodium azide	100 ug
V3916-20UG	0.2 mg/ml in 1X PBS with 0.1 mg/ml BSA (US sourced) and 0.05% sodium azide	20 ug
V3916SAF-100UG	1 mg/ml in 1X PBS; BSA free, sodium azide free	100 ug

**Bulk quote request**

<b>Availability</b>	1-3 business days
<b>Species Reactivity</b>	Human
<b>Format</b>	Purified
<b>Clonality</b>	Monoclonal (mouse origin)
<b>Isotype</b>	Mouse IgG1, kappa
<b>Clone Name</b>	MSSG95-2
<b>Purity</b>	Protein G affinity chromatography
<b>UniProt</b>	P40967
<b>Localization</b>	Cytoplasmic
<b>Applications</b>	Immunohistochemistry (FFPE) : 1-2ug/ml for 30 min at RT
<b>Limitations</b>	This Melanoma gp100 antibody is available for research use only.



IHC testing of human melanoma with Melanoma gp100 antibody (clone MSSG95-2). Required HIER: boil tissue sections in pH 9 10mM Tris with 1mM EDTA for 10-20 min followed by cooling at RT for 20 min.

## Description

PMEL17/Melanoma gp100/SILV plays a central role in the biogenesis of melanosomes. Involved in the maturation of melanosomes from stage I to II. The transition from stage I melanosomes to stage II melanosomes involves an elongation of the vesicle, and the appearance within of distinct fibrillar structures. Release of the soluble form, ME20-S, could protect tumor cells from antibody mediated immunity. [UniProt]

## Application Notes

The stated application concentrations are suggested starting points. Titration of the Melanoma gp100 antibody may be required due to differences in protocols and secondary/substrate sensitivity.

## Immunogen

A portion of amino acids 376-502 from the human protein was used as the immunogen for the Melanoma gp100 antibody.

## Storage

Store the Melanoma gp100 antibody at 2-8oC (with azide) or aliquot and store at -20oC or colder (without azide).