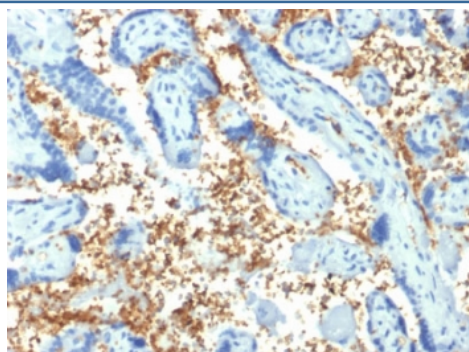


## SPTA1 Antibody / Spectrin alpha 1 [clone SPTA1/1810] (V3883)

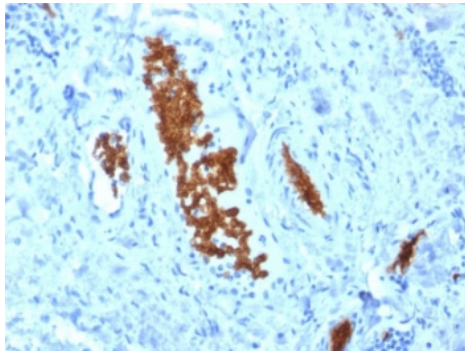
Catalog No.	Formulation	Size
V3883-100UG	0.2 mg/ml in 1X PBS with 0.1 mg/ml BSA (US sourced) and 0.05% sodium azide	100 ug
V3883-20UG	0.2 mg/ml in 1X PBS with 0.1 mg/ml BSA (US sourced) and 0.05% sodium azide	20 ug
V3883SAF-100UG	1 mg/ml in 1X PBS; BSA free, sodium azide free	100 ug

[Bulk quote request](#)

<b>Availability</b>	1-3 business days
<b>Species Reactivity</b>	Human
<b>Format</b>	Purified
<b>Clonality</b>	Monoclonal (mouse origin)
<b>Isotype</b>	Mouse IgG2b, kappa
<b>Clone Name</b>	SPTA1/1810
<b>Purity</b>	Protein G affinity chromatography
<b>UniProt</b>	P02549
<b>Localization</b>	Cytoplasmic, cell surface
<b>Applications</b>	ELISA : 2-4ug/ml (order BSA/azide-free format) Immunohistochemistry (FFPE) : 1-2ug/ml for 30 min at RT
<b>Limitations</b>	This SPTA1 antibody is available for research use only.

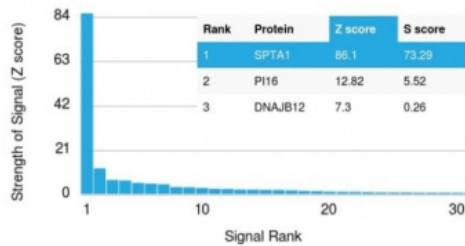


IHC staining of FFPE human placenta with SPTA1 antibody (clone SPTA1/1810). Required HIER: boil tissue sections in pH6, 10mM citrate buffer, for 10-20 min followed by cooling at RT for 20 min.



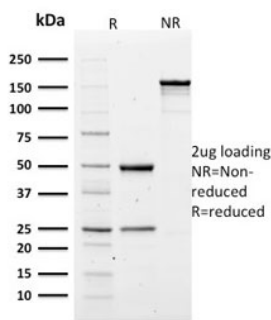
IHC staining of FFPE human tonsil with SPTA1 antibody (clone SPTA1/1810). Required HIER: boil tissue sections in pH6, 10mM citrate buffer, for 10-20 min followed by cooling at RT for 20 min.

#### Human Protein Microarray Specificity Validation



Analysis of HuProt(TM) microarray containing more than 19,000 full-length human proteins using SPTA1 antibody (clone SPTA1/1810). These results demonstrate the foremost specificity of the SPTA1/1810 mAb.

Z- and S- score: The Z-score represents the strength of a signal that an antibody (in combination with a fluorescently-tagged anti-IgG secondary Ab) produces when binding to a particular protein on the HuProt(TM) array. Z-scores are described in units of standard deviations (SD's) above the mean value of all signals generated on that array. If the targets on the HuProt(TM) are arranged in descending order of the Z-score, the S-score is the difference (also in units of SD's) between the Z-scores. The S-score therefore represents the relative target specificity of an Ab to its intended target.



SDS-PAGE analysis of purified, BSA-free SPTA1 antibody (clone SPTA1/1810) as confirmation of integrity and purity.

## Description

Spectrin is an actin crosslinking and molecular scaffold protein that links the plasma membrane to the actin cytoskeleton, and functions in the determination of cell shape, arrangement of transmembrane proteins, and organization of organelles.

Spectrins function as membrane organizers and stabilizers, composed of non-homologous and chains, which aggregate side-to-side in an anti-parallel fashion to form dimers, tetramers and higher polymers. Spectrin Ia and spectrin Ib are present in erythrocytes, whereas spectrin IIa (also designated fodrin alpha) and spectrin IIb (also designated fodrin beta) are present in other somatic cells. The spectrin tetramers in erythrocytes act as barriers to lateral diffusion, but spectrin dimers seem to lack this function.

## Application Notes

Optimal dilution of the SPTA1 antibody should be determined by the researcher.

## Immunogen

A portion of amino acids 356-475 from the human protein was used as the immunogen for the SPTA1 antibody.

## Storage

Store the SPTA1 antibody at 2-8oC (with azide) or aliquot and store at -20oC or colder (without azide).

Ordering:Phone:858.663.9055 | Fax:1.267.821.0800 | Email:[info@nsjbio.com](mailto:info@nsjbio.com)

Copyright © NSJ Bioreagents. All rights reserved