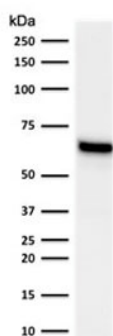


ER alpha Antibody [clone NR3Ga-2] (V3836)

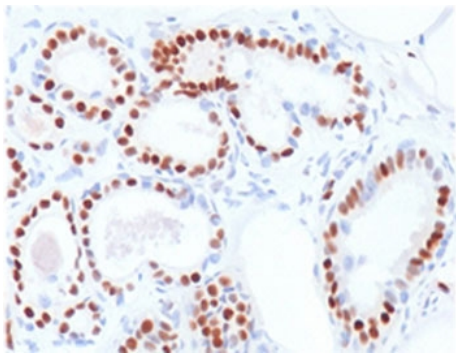
| Catalog No. | Formulation | Size |
|----------------|--|--------|
| V3836-100UG | 0.2 mg/ml in 1X PBS with 0.1 mg/ml BSA (US sourced) and 0.05% sodium azide | 100 ug |
| V3836-20UG | 0.2 mg/ml in 1X PBS with 0.1 mg/ml BSA (US sourced) and 0.05% sodium azide | 20 ug |
| V3836SAF-100UG | 1 mg/ml in 1X PBS; BSA free, sodium azide free | 100 ug |

[Bulk quote request](#)

| | |
|---------------------------|--|
| Availability | 1-3 business days |
| Species Reactivity | Human |
| Format | Purified |
| Clonality | Monoclonal (mouse origin) |
| Isotype | Mouse IgG2a, kappa |
| Clone Name | NR3Ga-2 |
| Purity | Protein G affinity chromatography |
| UniProt | P03372 |
| Localization | Nuclear |
| Applications | Western blot : 1-2ug/ml Immunohistochemistry (FFPE) : 1-2ug/ml for 30 min at RT |
| Limitations | This ER alpha antibody is available for research use only. |



Western blot testing of human MCF-7 lysate with Estrogen Receptor alpha antibody (clone NR3Ga-2). Expected molecular weight ~67 kDa.



IHC testing of human breast carcinoma stained with ER alpha antibody (clone NR3Ga-2). Staining of formalin-fixed tissues requires boiling tissue sections in pH 9 10mM Tris with 1mM EDTA for 10-20 min followed by cooling at RT for 20 minutes.

Description

Estrogen receptor (ER) is an important regulator of growth and differentiation in the mammary gland. ER presence in breast tumors indicates an increased likelihood of response to anti-estrogen therapy.

Application Notes

The optimal dilution of the ER alpha antibody for each application should be determined by the researcher.

Immunogen

Full length human protein was used as the immunogen for this ER alpha antibody.

Storage

Store the ER alpha antibody at 2-8oC (with azide) or aliquot and store at -20oC or colder (without azide).