

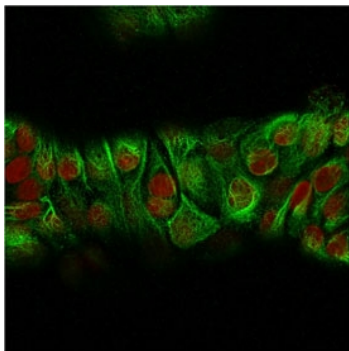
## Recombinant Basic Cytokeratin Antibody / Rabbit Monoclonal [clone KRTH/2147R] (V3812)

Catalog No.	Formulation	Size
V3812-100UG	0.2 mg/ml in 1X PBS with 0.1 mg/ml BSA (US sourced) and 0.05% sodium azide	100 ug
V3812-20UG	0.2 mg/ml in 1X PBS with 0.1 mg/ml BSA (US sourced) and 0.05% sodium azide	20 ug
V3812SAF-100UG	1 mg/ml in 1X PBS; BSA free, sodium azide free	100 ug

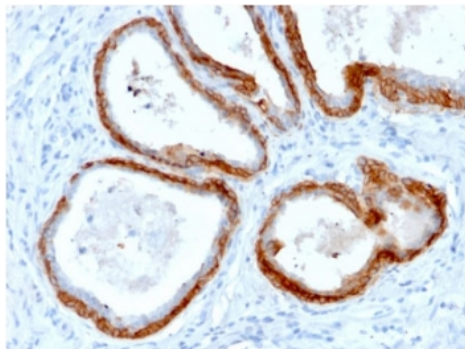
Recombinant **RABBIT MONOCLONAL**

[Bulk quote request](#)

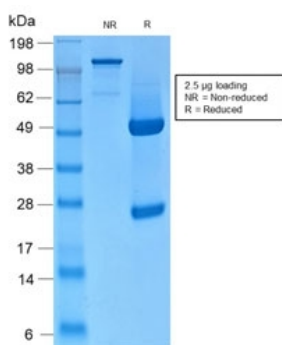
Availability	1-3 business days
Species Reactivity	Human, Mouse, Rat
Format	Purified
Clonality	Recombinant Rabbit Monoclonal
Isotype	Rabbit IgG, kappa
Clone Name	KRTH/2147R
Purity	Protein A affinity chromatography
UniProt	Q01546
Localization	Cytoplasmic
Applications	Flow cytometry : 1-2ug/10 <sup>6</sup> cells Immunofluorescence : 1-2 ug/ml Western blot : 1-2ug/ml Immunohistochemistry (FFPE) : 0.25-0.5ug/ml for 30 min at RT
Limitations	This recombinant Basic Cytokeratin antibody is available for research use only.



Immunofluorescent staining of MeOH-fixed human MCF7 cells with recombinant Basic Cytokeratin antibody (green, clone KRT18/834) and Reddot nuclear stain (red).



IHC testing of FFPE human prostate cancer with recombinant Basic Cytokeratin antibody (clone KRTH/2147R). Required HIER: boil tissue sections in 10mM citrate buffer, pH 6, for 10-20 min followed by cooling at RT for 20 min.



SDS-PAGE analysis of purified, BSA-free recombinant Basic Cytokeratin antibody (clone KRTH/2147R) as confirmation of integrity and purity.

## Description

This antibody recognizes CK1, CK5, CK10 and CK14. In normal epithelia, it stains stratified epithelia, myoepithelial cells and basal cells in the prostate gland and bronchi. This MAb shows no reactivity with hepatocytes, pancreatic acinar cells, proximal renal tubules, or endometrial glands; there is no reactivity with cells derived from simple epithelia. Mesenchymal tumors, lymphomas, melanomas, neural tumors, and neuroendocrine tumors are negative with this antibody. It stains myoepithelial cells and has been shown to be useful in distinguishing prostate adenocarcinoma from benign prostate. This antibody has also been useful in separating benign from malignant intraductal breast proliferations.

## Application Notes

Optimal dilution of the recombinant Basic Cytokeratin antibody should be determined by the researcher.

## Immunogen

Solubilized keratin extract from human stratum corneum was used as the immunogen for the recombinant Basic Cytokeratin antibody.

## Storage

Store the recombinant Basic Cytokeratin antibody at 2-8oC (with azide) or aliquot and store at -20oC or colder (without azide).

Ordering:Phone:858.663.9055 | Fax:1.267.821.0800 | Email:[info@nsjbio.com](mailto:info@nsjbio.com)

Copyright © NSJ Bioreagents. All rights reserved