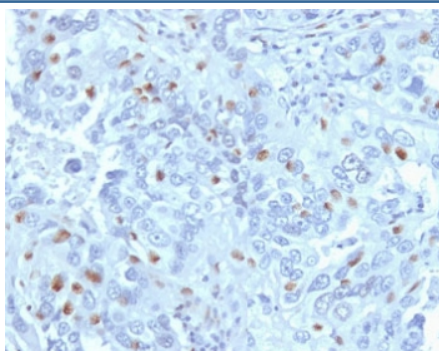


## CCNA2 Antibody / Cyclin A2 [clone CNA2-1] (V3783)

Catalog No.	Formulation	Size
V3783-100UG	0.2 mg/ml in 1X PBS with 0.1 mg/ml BSA (US sourced) and 0.05% sodium azide	100 ug
V3783-20UG	0.2 mg/ml in 1X PBS with 0.1 mg/ml BSA (US sourced) and 0.05% sodium azide	20 ug
V3783SAF-100UG	1 mg/ml in 1X PBS; BSA free, sodium azide free	100 ug

**Bulk quote request**

<b>Availability</b>	1-3 business days
<b>Species Reactivity</b>	Human
<b>Format</b>	Purified
<b>Clonality</b>	Monoclonal (mouse origin)
<b>Isotype</b>	Mouse IgG2a, kappa
<b>Clone Name</b>	CNA2-1
<b>Purity</b>	Protein G affinity chromatography
<b>UniProt</b>	P20248
<b>Gene ID</b>	890
<b>Localization</b>	Nuclear, cytoplasmic
<b>Applications</b>	IHC (FFPE) : 1-2ug/ml for 30 min at RT
<b>Limitations</b>	This CCNA2 antibody is available for research use only.



IHC testing of FFPE human endometrial carcinoma with CCNA2 antibody (clone CNA2-1). Required HIER: steam section in pH6 citrate buffer for 20 min and allow to cool prior to staining.

## Description

CCNA2 is a Cyclin which controls both the G1/S and the G2/M transition phases of the cell cycle. Functions through the formation of specific serine/threonine protein kinase holoenzyme complexes with the cyclin-dependent protein kinases CDK1 or CDK2. The cyclin subunit confers the substrate specificity of these complexes and differentially interacts with and activates CDK1 and CDK2 throughout the cell cycle. [Uniprot]

## Application Notes

Optimal dilution of the recombinant CCNA2 antibody should be determined by the researcher.

## Immunogen

Full length protein was used as the immunogen for this CCNA2 antibody.

## Storage

Store the CCNA2 antibody at 2-8oC (with azide) or aliquot and store at -20oC or colder (without azide).

## References (1)