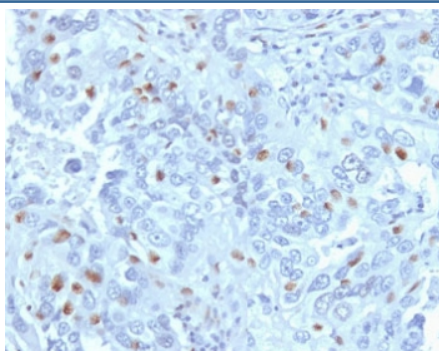


CCNA2 Antibody / Cyclin A2 [clone CNA2-1] (V3783)

Catalog No.	Formulation	Size
V3783-100UG	0.2 mg/ml in 1X PBS with 0.1 mg/ml BSA (US sourced) and 0.05% sodium azide	100 ug
V3783-20UG	0.2 mg/ml in 1X PBS with 0.1 mg/ml BSA (US sourced) and 0.05% sodium azide	20 ug
V3783SAF-100UG	1 mg/ml in 1X PBS; BSA free, sodium azide free	100 ug

Bulk quote request

Availability	1-3 business days
Species Reactivity	Human
Format	Purified
Clonality	Monoclonal (mouse origin)
Isotype	Mouse IgG2a, kappa
Clone Name	CNA2-1
Purity	Protein G affinity chromatography
UniProt	P20248
Gene ID	890
Localization	Nuclear, cytoplasmic
Applications	IHC (FFPE) : 1-2ug/ml for 30 min at RT
Limitations	This CCNA2 antibody is available for research use only.



IHC testing of FFPE human endometrial carcinoma with CCNA2 antibody (clone CNA2-1). Required HIER: steam section in pH6 citrate buffer for 20 min and allow to cool prior to staining.

Description

CCNA2 is a Cyclin which controls both the G1/S and the G2/M transition phases of the cell cycle. Functions through the formation of specific serine/threonine protein kinase holoenzyme complexes with the cyclin-dependent protein kinases CDK1 or CDK2. The cyclin subunit confers the substrate specificity of these complexes and differentially interacts with and activates CDK1 and CDK2 throughout the cell cycle. [Uniprot]

Application Notes

Optimal dilution of the recombinant CCNA2 antibody should be determined by the researcher.

Immunogen

Full length protein was used as the immunogen for this CCNA2 antibody.

Storage

Store the CCNA2 antibody at 2-8oC (with azide) or aliquot and store at -20oC or colder (without azide).

References (1)