

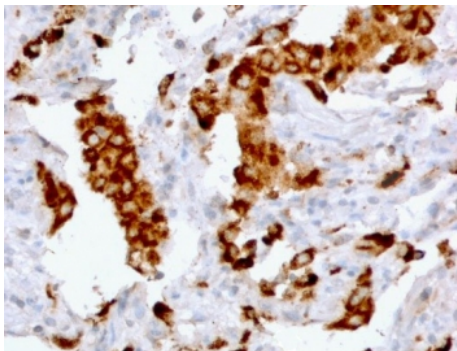
## Recombinant Napsin A Antibody / Rabbit Monoclonal [clone NPSNA-2R] (V3781)

Catalog No.	Formulation	Size
V3781-100UG	0.2 mg/ml in 1X PBS with 0.1 mg/ml BSA (US sourced) and 0.05% sodium azide	100 ug
V3781-20UG	0.2 mg/ml in 1X PBS with 0.1 mg/ml BSA (US sourced) and 0.05% sodium azide	20 ug
V3781SAF-100UG	1 mg/ml in 1X PBS; BSA free, sodium azide free	100 ug
V3781IHC-7ML	Prediluted in 1X PBS with 0.1 mg/ml BSA (US sourced) and 0.05% sodium azide; *For IHC use only*	7 ml

Recombinant **RABBIT MONOCLONAL**

[Bulk quote request](#)

Availability	1-3 business days
Species Reactivity	Human
Format	Purified
Clonality	Recombinant Rabbit Monoclonal
Isotype	Rabbit IgG, kappa
Clone Name	NPSNA-2R
Purity	Protein A affinity chromatography
UniProt	O96009
Localization	Cytoplasmic
Applications	Immunohistochemistry (FFPE) : 1-2ug/ml for 30 min at RT Prediluted IHC only format : incubate for 30 min at RT (1)
Limitations	This recombinant Napsin A antibody is available for research use only.



IHC staining of FFPE human lung adenocarcinoma with recombinant Napsin A antibody (clone NPSNA-2R). Required HIER: boil tissue sections in pH 9 10mM Tris with 1mM EDTA for 10-20 min followed by cooling at RT for 20 min.

## Description

Napsin-A is a protein that in humans is encoded by the NAPSA gene. The activation peptides of aspartic proteinases plays role as inhibitors of the active site. These peptide segments, or pro-parts, are deemed important for correct folding, targeting, and control of the activation of aspartic proteinase zymogens. The pro-Napsin A gene is expressed predominantly in lung and kidney. Its translation product is predicted to be a fully functional, glycosylated aspartic proteinase precursor containing an RGD motif and an additional 18 residues at its C-terminus. [Wiki]

## Application Notes

Optimal dilution of the recombinant Napsin-A antibody should be determined by the researcher.

1. The prediluted format is supplied in a dropper bottle and is optimized for use in IHC. After epitope retrieval step (if required), drip mAb solution onto the tissue section and incubate at RT for 30 min.

## Immunogen

A recombinant fragment from the human protein (amino acids 189-299) was used as the immunogen for the recombinant Napsin A antibody.

## Storage

Store the recombinant Napsin A antibody at 2-8°C (with azide) or aliquot and store at -20°C or colder (without azide).