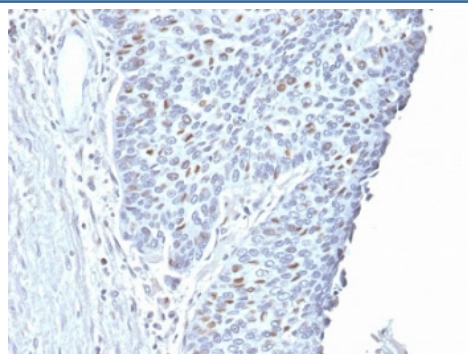


Cyclin A2 Antibody / CCNA2 [clone CCNA2/2333] (V3780)

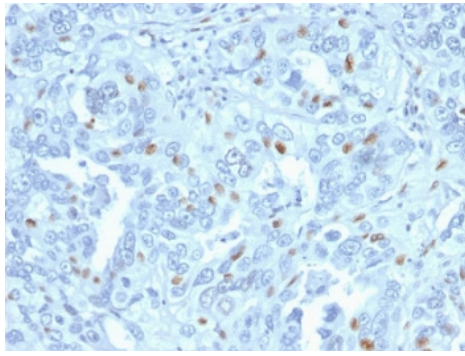
Catalog No.	Formulation	Size
V3780-100UG	0.2 mg/ml in 1X PBS with 0.1 mg/ml BSA (US sourced) and 0.05% sodium azide	100 ug
V3780-20UG	0.2 mg/ml in 1X PBS with 0.1 mg/ml BSA (US sourced) and 0.05% sodium azide	20 ug
V3780SAF-100UG	1 mg/ml in 1X PBS; BSA free, sodium azide free	100 ug

[Bulk quote request](#)

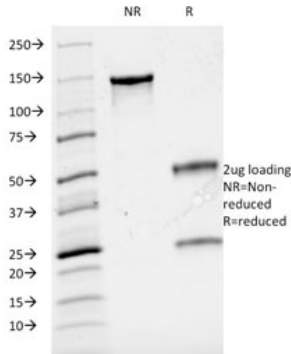
Availability	1-3 business days
Species Reactivity	Human
Format	Purified
Clonality	Monoclonal (mouse origin)
Isotype	Mouse IgG2a, kappa
Clone Name	CCNA2/2333
Purity	Protein G affinity chromatography
UniProt	P20248
Gene ID	890
Localization	Nuclear, cytoplasmic
Applications	Immunohistochemistry (FFPE) : 1-2ug/ml for 30 min at RT
Limitations	This Cyclin A2 antibody is available for research use only.



IHC testing of FFPE human endometrial carcinoma with Cyclin A2 antibody. Required HIER: steam section in pH6 citrate buffer for 20 min and allow to cool prior to staining.



IHC testing of FFPE human endometrial carcinoma with Cyclin A2 antibody. Required HIER: steam section in pH6 citrate buffer for 20 min and allow to cool prior to staining.



SDS-PAGE analysis of purified, BSA-free Cyclin A2 antibody (clone CCNA2/2333) as confirmation of integrity and purity.

Description

This antibody recognizes a protein of 50-55 kDa, which is identified as Cyclin A. Cyclins are regulatory subunits of the cyclin-dependent kinases (cdk's) and they control transition at different specific phases of the cell cycle. The temporal expression of cyclins is tightly regulated and subsequently plays a critical role in controlling the enzymatic activity of cdk's. These cyclin/cdk complexes are essential for passage through specific stages in the cell cycle. In mammalian somatic cells, Cyclin A is required for S-phase and passage through G2-phase. The D and E type cyclins regulate the passage of G1, while Cyclin B is a critical regulator of mitosis. Mutation or disruption of normal Cyclin A expression causes cells to arrest in G2-phase.

Application Notes

The concentration stated for each application is a general starting point. Variations in protocols, secondaries and substrates may require the Cyclin A2 antibody to be titrated up or down for optimal performance.

Immunogen

Full length protein was used as the immunogen for this CCNA2 antibody.

Storage

Store the Cyclin A2 antibody at 2-8°C (with azide) or aliquot and store at -20°C or colder (without azide).

References (1)