

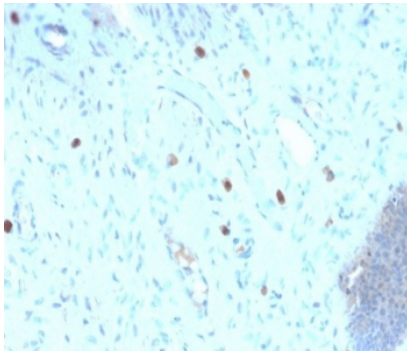
Recombinant HPV16 L1 Antibody / Rabbit Monoclonal [clone HPV16/2058R] (V3660)

Catalog No.	Formulation	Size
V3660-100UG	0.2 mg/ml in 1X PBS with 0.1 mg/ml BSA (US sourced) and 0.05% sodium azide	100 ug
V3660-20UG	0.2 mg/ml in 1X PBS with 0.1 mg/ml BSA (US sourced) and 0.05% sodium azide	20 ug
V3660SAF-100UG	1 mg/ml in 1X PBS; BSA free, sodium azide free	100 ug
V3660IHC-7ML	Prediluted in 1X PBS with 0.1 mg/ml BSA (US sourced) and 0.05% sodium azide; *For IHC use only*	7 ml

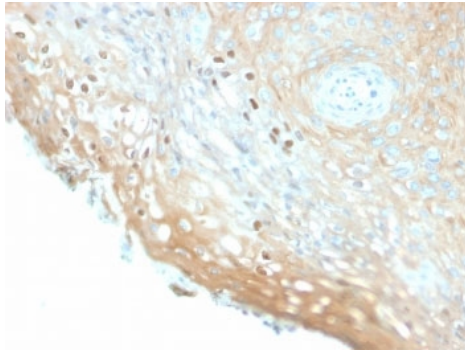
Recombinant **RABBIT MONOCLONAL**

[Bulk quote request](#)

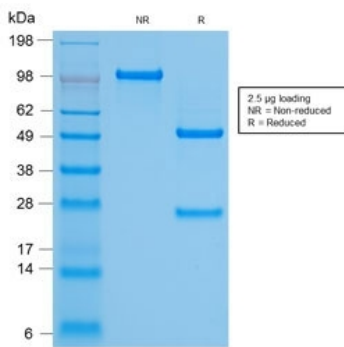
Availability	1-3 business days
Species Reactivity	Type 16 of Human Papilloma Virus (HPV-16)
Format	Purified
Clonality	Recombinant Rabbit Monoclonal
Isotype	Rabbit IgG, kappa
Clone Name	HPV16/2058R
Purity	Protein A affinity chromatography
UniProt	P03101
Localization	Nuclear
Applications	Immunohistochemistry (FFPE) : 0.5-1ug/ml for 30 min at RT
Limitations	This recombinant HPV16 L1 antibody is available for research use only.



IHC staining of FFPE human cervix with recombinant HPV16 L1 antibody (clone HPV16/2058R). Required HIER: boil tissue sections in pH9 EDTA buffer for 45 min followed by cooling at RT for 20 min.



IHC staining of FFPE human cervix with recombinant HPV16 L1 antibody (clone HPV16/2058R). Required HIER: boil tissue sections in pH6, 10mM citrate buffer, for 10-20 min followed by cooling at RT for 20 min.



SDS-PAGE analysis of purified, BSA-free recombinant HPV16 L1 antibody (clone HPV16/2058R) as confirmation of integrity and purity.

Description

Reacts with a protein of 57kDa, identified as the L1 protein of human papilloma virus type 16 (HPV-16). It is the major capsid protein of HPV-16. Infection with specific types of HPV has been associated with an increased risk of developing cervical neoplasia. HPV types 6 and 11 have been associated with relatively benign diseases such as genital warts but types 16 and 18 are strongly associated with cervical, vaginal, and vulvar malignancies. The antibody reacts very strongly with formalin-fixed, paraffin-embedded tissues containing HPV-16 or -33; very weak reactions were occasionally observed with biopsy specimens or smears containing HPV-6 or HPV-11. It cross-reacts with HPV37.

Application Notes

The stated application concentrations are suggested starting points. Titration of the recombinant HPV16 L1 antibody may be required due to differences in protocols and secondary/substrate sensitivity.

1. The prediluted format is supplied in a dropper bottle and is optimized for use in IHC. After epitope retrieval step (if required), drip mAb solution onto the tissue section and incubate at RT for 30 min.

Immunogen

Human papilloma virus type 16, major capsid protein L1, was used as the immunogen for the recombinant HPV16 L1 antibody.

Storage

Store the recombinant HPV16 L1 antibody at 2-8oC (with azide) or aliquot and store at -20oC or colder (without azide).