

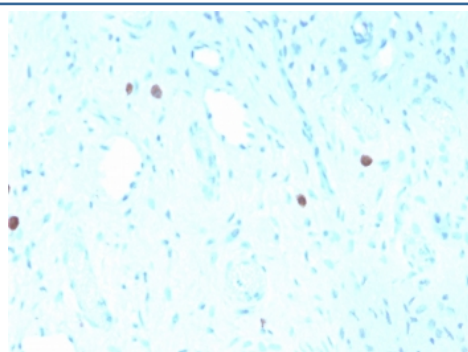
Recombinant HPV16 L1 Antibody [clone rHPV16L1/1058] (V3659)

Catalog No.	Formulation	Size
V3659-100UG	0.2 mg/ml in 1X PBS with 0.1 mg/ml BSA (US sourced) and 0.05% sodium azide	100 ug
V3659-20UG	0.2 mg/ml in 1X PBS with 0.1 mg/ml BSA (US sourced) and 0.05% sodium azide	20 ug
V3659SAF-100UG	1 mg/ml in 1X PBS; BSA free, sodium azide free	100 ug
V3659IHC-7ML	Prediluted in 1X PBS with 0.1 mg/ml BSA (US sourced) and 0.05% sodium azide; *For IHC use only*	7 ml

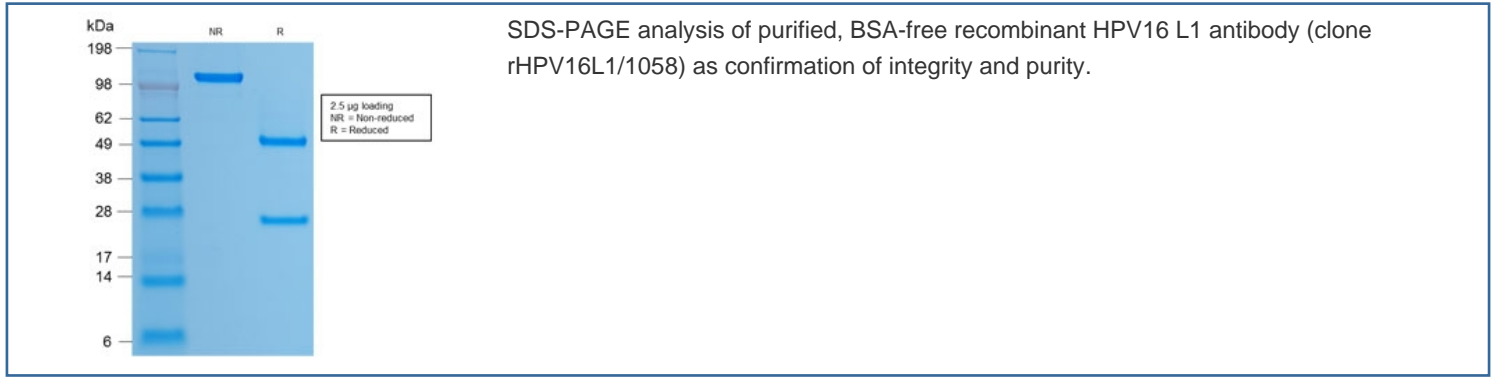
Recombinant **MOUSE MONOCLONAL**

[Bulk quote request](#)

Availability	1-3 business days
Species Reactivity	Type 16 of Human Papilloma Virus (HPV-16)
Format	Purified
Clonality	Recombinant Mouse Monoclonal
Isotype	Mouse IgG1
Clone Name	rHPV16L1/1058
Purity	Protein G affinity chromatography
UniProt	P03101
Localization	Nuclear
Applications	Immunohistochemistry (FFPE) : 1-2ug/ml for 30 min at RT
Limitations	This recombinant HPV16 L1 antibody is available for research use only.



IHC staining of FFPE human cervix with recombinant HPV16 L1 antibody (clone rHPV16L1/1058). Required HIER: boil tissue sections in pH6, 10mM citrate buffer, for 10-20 min followed by cooling at RT for 20 min.



Description

Reacts with a protein of 57kDa, identified as the L1 protein of human papilloma virus type 16 (HPV-16). It is the major capsid protein of HPV-16. Infection with specific types of HPV has been associated with an increased risk of developing cervical neoplasia. HPV types 6 and 11 have been associated with relatively benign diseases such as genital warts but types 16 and 18 are strongly associated with cervical, vaginal, and vulvar malignancies. The antibody reacts very strongly with formalin-fixed, paraffin-embedded tissues containing HPV-16 or -33; very weak reactions were occasionally observed with biopsy specimens or smears containing HPV-6 or HPV-11. It cross-reacts with HPV37.

Application Notes

Optimal dilution of the recombinant HPV16 L1 antibody should be determined by the researcher.

1. The prediluted format is supplied in a dropper bottle and is optimized for use in IHC. After epitope retrieval step (if required), drip mAb solution onto the tissue section and incubate at RT for 30 min.

Immunogen

Recombinant human papilloma virus type 16, major capsid protein L1, was used as the immunogen for the recombinant HPV16 L1 antibody.

Storage

Store the recombinant HPV16 L1 antibody at 2-8oC (with azide) or aliquot and store at -20oC or colder (without azide).