

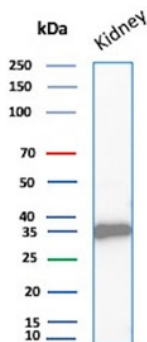
Recombinant Napsin A Antibody / Rabbit Monoclonal [clone NAPSA/1865R] (V3635)

Catalog No.	Formulation	Size
V3635-100UG	0.2 mg/ml in 1X PBS with 0.1 mg/ml BSA (US sourced) and 0.05% sodium azide	100 ug
V3635-20UG	0.2 mg/ml in 1X PBS with 0.1 mg/ml BSA (US sourced) and 0.05% sodium azide	20 ug
V3635SAF-100UG	1 mg/ml in 1X PBS; BSA free, sodium azide free	100 ug
V3635IHC-7ML	Prediluted in 1X PBS with 0.1 mg/ml BSA (US sourced) and 0.05% sodium azide; *For IHC use only*	7 ml

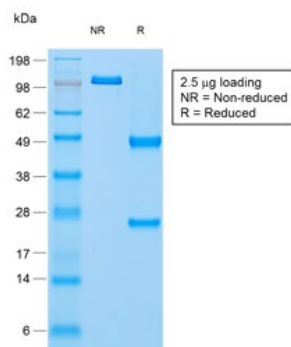
Recombinant **RABBIT MONOCLONAL**

[Bulk quote request](#)

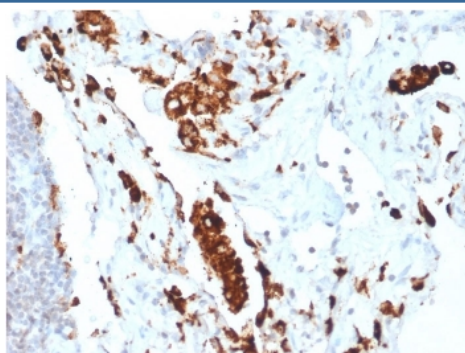
Availability	1-3 business days
Species Reactivity	Human
Format	Purified
Clonality	Recombinant Rabbit Monoclonal
Isotype	Rabbit IgG, kappa
Clone Name	NAPSA/1865R
Purity	Protein A affinity chromatography
UniProt	O96009
Localization	Cytoplasmic
Applications	Immunohistochemistry (FFPE) : 1-2ug/ml for 30 min at RT Western blot : 2-4ug/ml
Limitations	This recombinant Napsin A antibody is available for research use only.



Western blot testing of human kidney tissue lysate with recombinant Napsin A antibody.
Expected molecular weight: 38-45 kDa.



SDS-PAGE analysis of purified, BSA-free recombinant Napsin A antibody (clone NAPSA/1865R) as confirmation of integrity and purity.



IHC testing of FFPE human lung adenocarcinoma with recombinant Napsin A antibody (clone NAPSA/1865R). Required HIER: boil tissue sections in pH 9 10mM Tris with 1mM EDTA for 10-20 min followed by cooling at RT for 20 min.

Description

Napsin is a pepsin-like aspartic proteinase connected with maturation of surfactant protein B. There are two closely related napsins, napsin A and napsin B. Napsin A is expressed as a single chain protein. Immunohistochemical studies revealed high expression levels of napsin A in human lung and kidney but low expression in spleen. Napsin A is expressed in type II pneumocytes and in adenocarcinomas of lung. The high specificity expression of napsin A in adenocarcinomas of lung is useful to distinguish primary lung adenocarcinomas from adenocarcinomas of other organs.

Application Notes

The stated application concentrations are suggested starting points. Titration of the recombinant Napsin A antibody may be required due to differences in protocols and secondary/substrate sensitivity.

1. The prediluted format is supplied in a dropper bottle and is optimized for use in IHC. After epitope retrieval step (if required), drip mAb solution onto the tissue section and incubate at RT for 30 min.

Immunogen

A recombinant fragment from the human protein (amino acids 189-299) was used as the immunogen for the recombinant

Napsin A antibody.

Storage

Store the recombinant Napsin A antibody at 2-8oC (with azide) or aliquot and store at -20oC or colder (without azide).

Ordering:Phone:858.663.9055 | Fax:1.267.821.0800 | Email:info@nsjbio.com

Copyright © NSJ Bioreagents. All rights reserved