

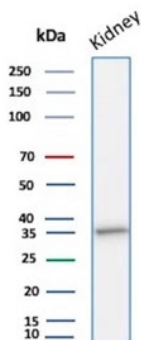
## Recombinant Napsin A Antibody [clone rNAPSA/1239] (V3634)

Catalog No.	Formulation	Size
V3634-100UG	0.2 mg/ml in 1X PBS with 0.1 mg/ml BSA (US sourced) and 0.05% sodium azide	100 ug
V3634-20UG	0.2 mg/ml in 1X PBS with 0.1 mg/ml BSA (US sourced) and 0.05% sodium azide	20 ug
V3634SAF-100UG	1 mg/ml in 1X PBS; BSA free, sodium azide free	100 ug
V3634IHC-7ML	Prediluted in 1X PBS with 0.1 mg/ml BSA (US sourced) and 0.05% sodium azide; *For IHC use only*	7 ml

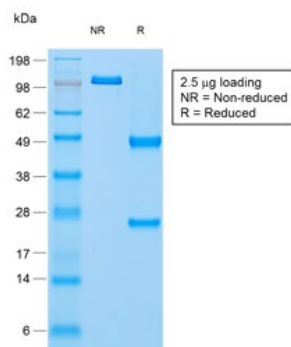
Recombinant **MOUSE MONOCLONAL**

[Bulk quote request](#)

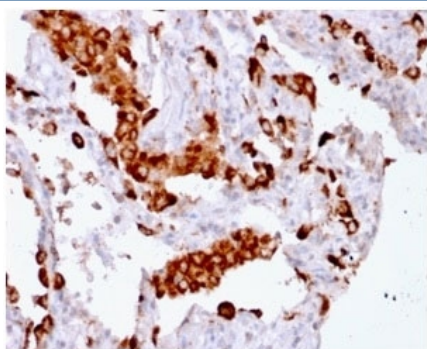
<b>Availability</b>	1-3 business days
<b>Species Reactivity</b>	Human
<b>Format</b>	Purified
<b>Clonality</b>	Recombinant Mouse Monoclonal
<b>Isotype</b>	Mouse IgG1, kappa
<b>Clone Name</b>	rNAPSA/1239
<b>Purity</b>	Protein G affinity chromatography
<b>UniProt</b>	O96009
<b>Localization</b>	Cytoplasmic
<b>Applications</b>	Immunohistochemistry (FFPE) : 1-2ug/ml for 30 min at RT Western blot : 2-4ug/ml
<b>Limitations</b>	This recombinant Napsin A antibody is available for research use only.



Western blot testing of human kidney tissue lysate with recombinant Napsin A antibody.  
Expected molecular weight: 38-45 kDa.



SDS-PAGE analysis of purified, BSA-free recombinant Napsin A antibody (clone rNAPSA/1239) as confirmation of integrity and purity.



IHC testing of FFPE human lung adenocarcinoma with recombinant Napsin A antibody (clone rNAPSA/1239). Required HIER: boil tissue sections in pH6, 10mM citrate buffer, for 10-20 min followed by cooling at RT for 20 min.

## Description

Napsin-A is a protein that in humans is encoded by the NAPSA gene. The activation peptides of aspartic proteinases plays role as inhibitors of the active site. These peptide segments, or pro-parts, are deemed important for correct folding, targeting, and control of the activation of aspartic proteinase zymogens. The pronapsin A gene is expressed predominantly in lung and kidney. Its translation product is predicted to be a fully functional, glycosylated aspartic proteinase precursor containing an RGD motif and an additional 18 residues at its C-terminus. [Wiki]

## Application Notes

Optimal dilution of the recombinant Napsin A antibody should be determined by the researcher.

1. The prediluted format is supplied in a dropper bottle and is optimized for use in IHC. After epitope retrieval step (if required), drip mAb solution onto the tissue section and incubate at RT for 30 min.

## Immunogen

A recombinant fragment from the human protein (amino acids 189-299) was used as the immunogen for the recombinant Napsin A antibody.

## Storage

Store the recombinant Napsin A antibody at 2-8oC (with azide) or aliquot and store at -20oC or colder (without azide).

Ordering:Phone:858.663.9055 | Fax:1.267.821.0800 | Email:[info@nsjbio.com](mailto:info@nsjbio.com)

Copyright © NSJ Bioreagents. All rights reserved