

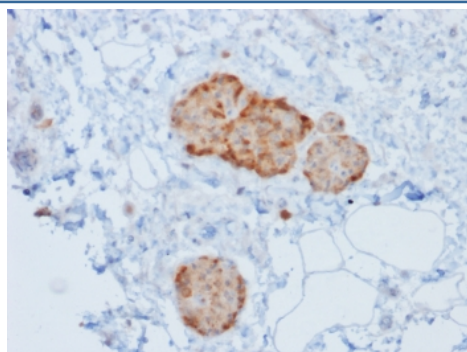
Recombinant CHGA Antibody / Chromogranin A [clone rCHGA/777] (V3623)

Catalog No.	Formulation	Size
V3623-100UG	0.2 mg/ml in 1X PBS with 0.1 mg/ml BSA (US sourced) and 0.05% sodium azide	100 ug
V3623-20UG	0.2 mg/ml in 1X PBS with 0.1 mg/ml BSA (US sourced) and 0.05% sodium azide	20 ug
V3623SAF-100UG	1 mg/ml in 1X PBS; BSA free, sodium azide free	100 ug
V3623IHC-7ML	Prediluted in 1X PBS with 0.1 mg/ml BSA (US sourced) and 0.05% sodium azide; *For IHC use only*	7 ml

Recombinant **MOUSE MONOCLONAL**

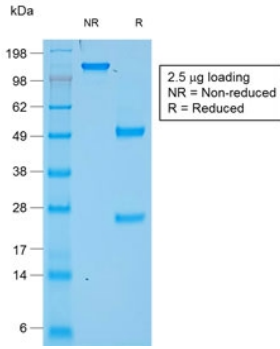
[Bulk quote request](#)

Availability	1-3 business days
Species Reactivity	Human
Format	Purified
Clonality	Recombinant Mouse Monoclonal
Isotype	Mouse IgG1, kappa
Clone Name	rCHGA/777
Purity	Protein G affinity chromatography
UniProt	P10645
Localization	Finely granular cytoplasmic
Applications	Immunohistochemistry (FFPE) : 0.5-1ug/ml for 30 min at RT
Limitations	This recombinant CHGA antibody is available for research use only.



IHC testing of human pancreas tissue with recombinant CHGA antibody (rCHGA/777). Required HIER: boil tissue sections in 10mM citrate buffer, pH 6, for 10-20 min followed by cooling at RT for 20 min.

SDS-PAGE analysis of purified, BSA-free recombinant CHGA antibody (clone rCHGA/777) as confirmation of integrity and purity.



Description

Chromogranin A / CHGA is present in neuroendocrine cells throughout the body, including the neuroendocrine cells of the large and small intestine, adrenal medulla and pancreatic islets. It is an excellent marker for carcinoid tumors, pheochromocytomas, paragangliomas, and other neuroendocrine tumors. Co-expression of chromogranin A and neuron specific enolase (NSE) is common in neuroendocrine neoplasms. Reportedly, co-expression of certain keratins and chromogranin indicates neuroendocrine lineage. The presence of strong anti-chromogranin staining and absence of anti-keratin staining should raise the possibility of paraganglioma. The co-expression of chromogranin and NSE is typical of neuroendocrine neoplasms. Most pituitary adenomas and prolactinomas readily express chromogranin.

Application Notes

Optimal dilution of the recombinant CHGA antibody should be determined by the researcher.

1. The prediluted format is supplied in a dropper bottle and is optimized for use in IHC. After epitope retrieval step (if required), drip mAb solution onto the tissue section and incubate at RT for 30 min.

Immunogen

Recombinant human protein was used as the immunogen for the recombinant CHGA antibody.

Storage

Store the recombinant CHGA antibody at 2-8°C (with azide) or aliquot and store at -20°C or colder (without azide).