

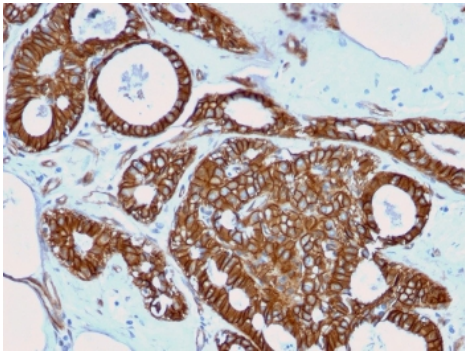
Recombinant Beta Catenin Antibody [clone rCTNNB1/2173] (V3601)

Catalog No.	Formulation	Size
V3601-100UG	0.2 mg/ml in 1X PBS with 0.1 mg/ml BSA (US sourced) and 0.05% sodium azide	100 ug
V3601-20UG	0.2 mg/ml in 1X PBS with 0.1 mg/ml BSA (US sourced) and 0.05% sodium azide	20 ug
V3601SAF-100UG	1 mg/ml in 1X PBS; BSA free, sodium azide free	100 ug
V3601IHC-7ML	Prediluted in 1X PBS with 0.1 mg/ml BSA (US sourced) and 0.05% sodium azide; *For IHC use only*	7 ml

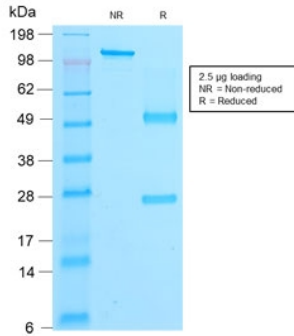
Recombinant **MOUSE MONOCLONAL**

[Bulk quote request](#)

Availability	1-3 business days
Species Reactivity	Human, Mouse, Rat
Format	Purified
Clonality	Recombinant Mouse Monoclonal
Isotype	Mouse IgG1, kappa
Clone Name	rCTNNB1/2173
Purity	Protein G affinity chromatography
UniProt	P35222
Localization	Cell surface, cytoplasmic, cell junctions
Applications	Immunofluorescence : 1-3ug/ml Western blot : 2-4ug/ml Immunohistochemistry (FFPE) : 1-2ug/ml for 30 min at RT
Limitations	This recombinant beta Catenin antibody is available for research use only.

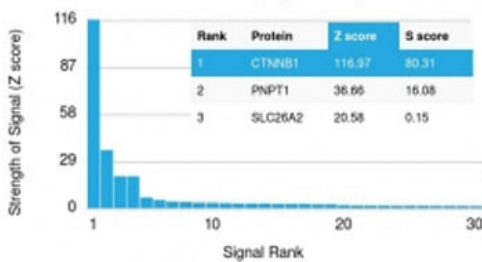


IHC testing of FFPE human breast cancer with recombinant beta Catenin antibody (clone rCTNNB1/2173). Required HIER: boil tissue sections in 10mM Tris with 1mM EDTA, pH 9, for 10-20 min followed by cooling at RT for 20 min.



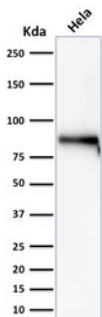
SDS-PAGE analysis of purified, BSA-free recombinant beta Catenin antibody (clone rCTNNB1/2173) as confirmation of integrity and purity.

Human Protein Microarray Specificity Validation

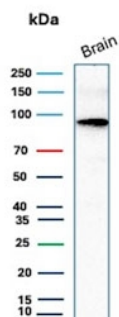


Analysis of HuProt(TM) microarray containing more than 19,000 full-length human proteins using recombinant beta Catenin antibody (clone rCTNNB1/2173). These results demonstrate the foremost specificity of the rCTNNB1/2173 mAb.

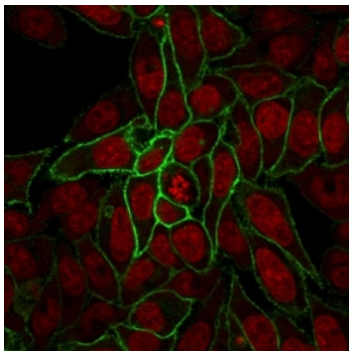
Z- and S- score: The Z-score represents the strength of a signal that an antibody (in combination with a fluorescently-tagged anti-IgG secondary Ab) produces when binding to a particular protein on the HuProt(TM) array. Z-scores are described in units of standard deviations (SD's) above the mean value of all signals generated on that array. If the targets on the HuProt(TM) are arranged in descending order of the Z-score, the S-score is the difference (also in units of SD's) between the Z-scores. The S-score therefore represents the relative target specificity of an Ab to its intended target.



Western blot testing of human HeLa cell lysate with recombinant beta Catenin antibody. Predicted molecular weight ~85 kDa, but routinely observed at 90-95 kDa.



Western blot testing of human brain tissue lysate with recombinant beta Catenin antibody. Predicted molecular weight ~85 kDa, but routinely observed at 90-95 kDa.



Immunofluorescent staining of human HeLa cells with recombinant beta Catenin antibody (clone rCTNNB1/2173, green) and Reddot nuclear stain (red).

Description

The protein encoded by this gene is part of a complex of proteins that constitute adherens junctions (AJs). AJs are necessary for the creation and maintenance of epithelial cell layers by regulating cell growth and adhesion between cells. The encoded protein also anchors the actin cytoskeleton and may be responsible for transmitting the contact inhibition signal that causes cells to stop dividing once the epithelial sheet is complete. Finally, this protein binds to the product of the APC gene, which is mutated in adenomatous polyposis of the colon. Mutations in this gene are a cause of colorectal cancer (CRC), pilomatixoma (PTR), medulloblastoma (MDB), and ovarian cancer. [RefSeq]

Application Notes

Titration of the recombinant beta Catenin antibody may be required due to differences in protocols and secondary/substrate sensitivity.

1. The prediluted format is supplied in a dropper bottle and is optimized for use in IHC. After epitope retrieval step (if required), drip mAb solution onto the tissue section and incubate at RT for 30 min.

Immunogen

Chicken beta Catenin protein was used as the immunogen for the recombinant beta Catenin antibody.

Storage

Store the recombinant beta Catenin antibody at 2-8°C (with azide) or aliquot and store at -20°C or colder (without azide).