

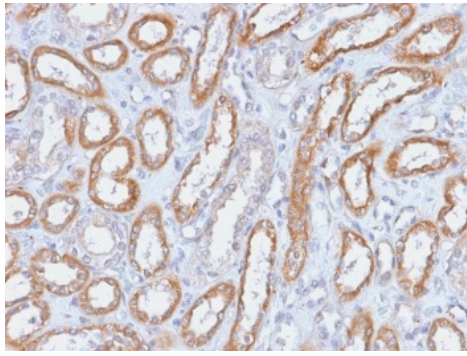
## Recombinant Integrin beta 3 Antibody / ITGB3 / CD61 [clone ITGB3/2166R] (V3571)

Catalog No.	Formulation	Size
V3571-100UG	0.2 mg/ml in 1X PBS with 0.1 mg/ml BSA (US sourced) and 0.05% sodium azide	100 ug
V3571-20UG	0.2 mg/ml in 1X PBS with 0.1 mg/ml BSA (US sourced) and 0.05% sodium azide	20 ug
V3571SAF-100UG	1 mg/ml in 1X PBS; BSA free, sodium azide free	100 ug
V3571IHC-7ML	Prediluted in 1X PBS with 0.1 mg/ml BSA (US sourced) and 0.05% sodium azide; *For IHC use only*	7 ml

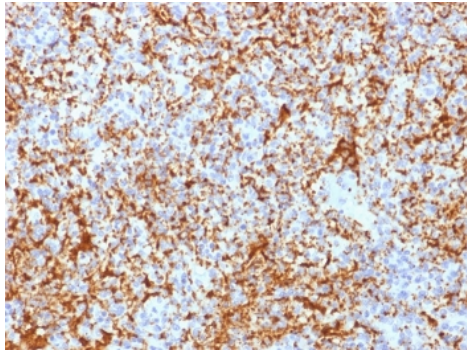
Recombinant **RABBIT MONOCLONAL**

[Bulk quote request](#)

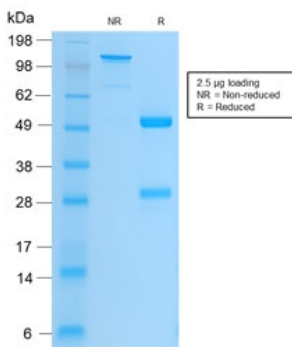
<b>Availability</b>	1-3 business days
<b>Species Reactivity</b>	Human
<b>Format</b>	Purified
<b>Clonality</b>	Recombinant Rabbit Monoclonal
<b>Isotype</b>	Rabbit IgG, kappa
<b>Clone Name</b>	ITGB3/2166R
<b>Purity</b>	Protein A affinity
<b>UniProt</b>	P05106
<b>Localization</b>	Cell surface, cytoplasmic
<b>Applications</b>	Immunohistochemistry (FFPE) : 1-2ug/ml for 30 min at RT
<b>Limitations</b>	This recombinant Integrin beta 3 antibody is available for research use only.



IHC testing of FFPE human renal cell carcinoma with Integrin beta 3 antibody (clone ITGB3/2166R). Required HIER: boil tissue sections in 10mM Tris with 1mM EDTA, pH9, for 10-20 min followed by cooling at RT for 20 min.



IHC testing of FFPE human spleen with Integrin beta 3 antibody (clone ITGB3/2166R). Required HIER: boil tissue sections in 10mM Tris with 1mM EDTA, pH9, for 10-20 min followed by cooling at RT for 20 min.



SDS-PAGE analysis of purified, BSA-free recombinant Integrin beta 3 antibody (clone ITGB3/2166R) as confirmation of integrity and purity.

## Description

Reacts with human Integrin beta 3, also called CD61. It associates with the alphaV-chain (CD51) to form vitronectin receptor, or with the alpha-IIb-chain (CD41) to form the GpIIb/GpIIIa complex (CD41/CD61). The CD41/CD61 complex appears early in megakaryocyte maturation. The activated CD41/CD61 complex is a receptor for von Willebrand factor, soluble fibrinogen, fibronectin, vitronectin and thrombospondin. It plays a central role in platelet activation and aggregation. The CD51/CD61 is implicated in tumor metastasis and adenoviral infection. The antibody detects platelets in smears of blood and bone marrow, as well as megakaryocytes in frozen sections and cell smears. The antibody is useful for classification of megakaryoblastic leukemia.

## Application Notes

Titration of the recombinant Integrin beta 3 antibody may be required due to differences in protocols and secondary/substrate sensitivity.

1. The prediluted format is supplied in a dropper bottle and is optimized for use in IHC. After epitope retrieval step (if required), drip mAb solution onto the tissue section and incubate at RT for 30 min.

## Immunogen

Human recombinant protein was used as the immunogen for the recombinant Integrin beta 3 antibody.

## **Storage**

Store the recombinant Integrin beta 3 antibody at 2-8oC (with azide) or aliquot and store at -20oC or colder (without azide).