

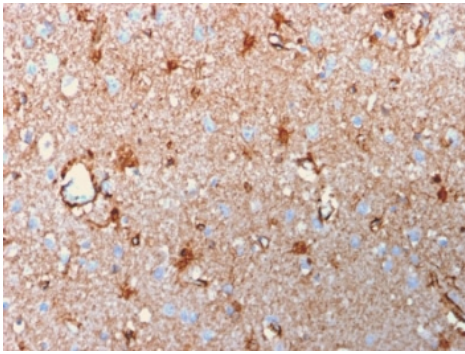
Recombinant S100B Antibody [clone rS100B/1896] (V3556)

| Catalog No. | Formulation | Size |
|----------------|---|--------|
| V3556-100UG | 0.2 mg/ml in 1X PBS with 0.1 mg/ml BSA (US sourced) and 0.05% sodium azide | 100 ug |
| V3556-20UG | 0.2 mg/ml in 1X PBS with 0.1 mg/ml BSA (US sourced) and 0.05% sodium azide | 20 ug |
| V3556SAF-100UG | 1 mg/ml in 1X PBS; BSA free, sodium azide free | 100 ug |
| V3556IHC-7ML | Prediluted in 1X PBS with 0.1 mg/ml BSA (US sourced) and 0.05% sodium azide; *For IHC use only* | 7 ml |

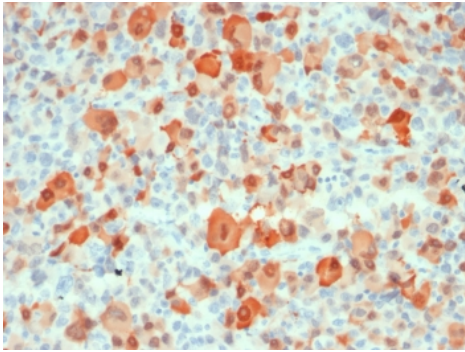
Recombinant **MOUSE MONOCLONAL**

[Bulk quote request](#)

| | |
|--------------------|--|
| Availability | 1-3 business days |
| Species Reactivity | Human |
| Format | Purified |
| Clonality | Recombinant Mouse Monoclonal |
| Isotype | Mouse IgG1, kappa |
| Clone Name | rS100B/1896 |
| Purity | Protein G affinity chromatography |
| UniProt | P04271 |
| Localization | Cytoplasmic, nuclear |
| Applications | Immunohistochemistry (FFPE) : 1-2ug/ml for 30 min at RT Western blot : 1-2ug/ml |
| Limitations | This recombinant S100B antibody is available for research use only. |

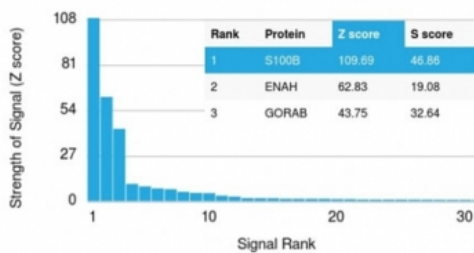


IHC testing of FFPE human brain with recombinant S100B antibody (clone rS100B/1896).
HIER: steam sections in pH 9 10mM Tris with 1mM EDTA for 10-20 min.



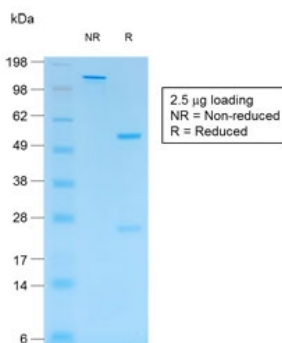
IHC testing of FFPE human melanoma with recombinant S100B antibody (clone rS100B/1896). HIER: steam sections in pH 9 10mM Tris with 1mM EDTA for 10-20 min.

Human Protein Microarray Specificity Validation

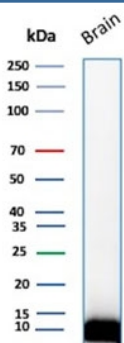


Analysis of HuProt(TM) microarray containing more than 19,000 full-length human proteins using recombinant S100B antibody (clone rS100B/1896). These results demonstrate the foremost specificity of the rS100B/1012 mAb.

Z- and S- score: The Z-score represents the strength of a signal that an antibody (in combination with a fluorescently-tagged anti-IgG secondary Ab) produces when binding to a particular protein on the HuProt(TM) array. Z-scores are described in units of standard deviations (SD's) above the mean value of all signals generated on that array. If the targets on the HuProt(TM) are arranged in descending order of the Z-score, the S-score is the difference (also in units of SD's) between the Z-scores. The S-score therefore represents the relative target specificity of an Ab to its intended target.



SDS-PAGE analysis of purified, BSA-free recombinant S100B antibody (clone rS100B/1896) as confirmation of integrity and purity.



Western blot testing of human brain tissue lysate with recombinant S100B antibody (clone rS100B/1896). Predicted molecular weight ~11 kDa.

Description

S100 belongs to the family of calcium binding proteins. S100A and S100B proteins are two members of the S100 family. S100A is composed of an alpha and a beta chain whereas S100B is composed of two beta chains. This antibody is specific against an epitope located on the beta-chain (i.e. in S-100A and S-100B) but not on the alpha-chain of S-100 (i.e. in S-100A and S100A0). This antibody can be used to localize S-100A and S-100B in various tissue sections. S-100 protein has been found in normal melanocytes, Langerhans cells, histiocytes, chondrocytes, lipocytes, skeletal and cardiac muscle, Schwann cells, epithelial and myoepithelial cells of the breast, salivary and sweat glands, as well as in glial cells. Neoplasms derived from these cells also express S-100 protein, albeit non-uniformly. A large number of well-differentiated tumors of the salivary gland, adipose and cartilaginous tissue, and Schwann cell-derived tumors express S-100 protein. Almost all malignant melanomas and cases of histiocytosis X are positive for S-100 protein.

Application Notes

The optimal dilution of the recombinant S100B antibody for each application should be determined by the researcher.

1. The prediluted format is supplied in a dropper bottle and is optimized for use in IHC. After epitope retrieval step (if required), drip mAb solution onto the tissue section and incubate at RT for 30 min.

Immunogen

Full length human recombinant S100B protein was used as the immunogen for this recombinant S100B antibody.

Storage

Store the recombinant S100B antibody at 2-8oC (with azide) or aliquot and store at -20oC or colder (without azide).