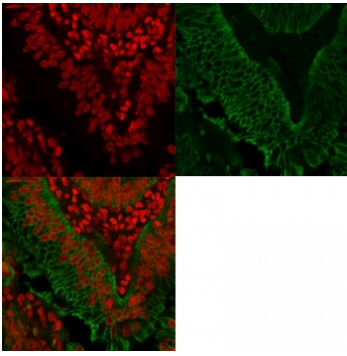


Anti-EpCAM Antibody / Extracellular domain [clone EGP40/1372] (V3525)

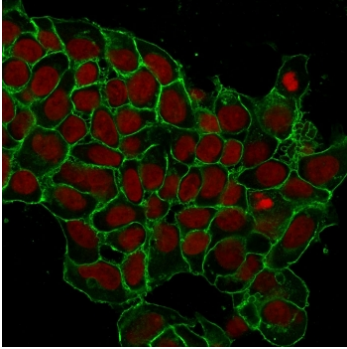
Catalog No.	Formulation	Size
V3525-100UG	0.2 mg/ml in 1X PBS with 0.1 mg/ml BSA (US sourced) and 0.05% sodium azide	100 ug
V3525-20UG	0.2 mg/ml in 1X PBS with 0.1 mg/ml BSA (US sourced) and 0.05% sodium azide	20 ug
V3525SAF-100UG	1 mg/ml in 1X PBS; BSA free, sodium azide free	100 ug
V3525IHC-7ML	Prediluted in 1X PBS with 0.1 mg/ml BSA (US sourced) and 0.05% sodium azide; *For IHC use only*	7 ml

Bulk quote request

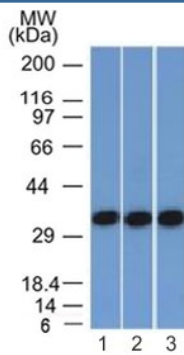
Availability	1-3 business days
Species Reactivity	Human, Dog, Cat
Format	Purified
Clonality	Monoclonal (mouse origin)
Isotype	Mouse IgG1, kappa
Clone Name	EGP40/1372
Purity	Protein G affinity chromatography
UniProt	P16422
Localization	Cell surface, cytoplasmic
Applications	Flow cytometry : 1-2ug/10 ⁶ cells Immunofluorescence : 1-2ug/ml Western blot : 1-2ug/ml Immunohistochemistry (FFPE) : 1-2ug/ml for 30 min at RT
Limitations	This anti-EpCAM antibody is available for research use only.



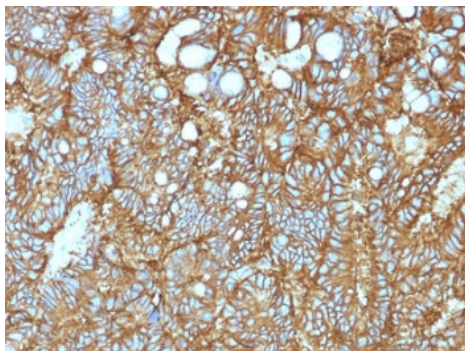
Immunofluorescent staining of FFPE human colorectal carcinoma with anti-EpCAM antibody (green) and Reddot nuclear stain (red).



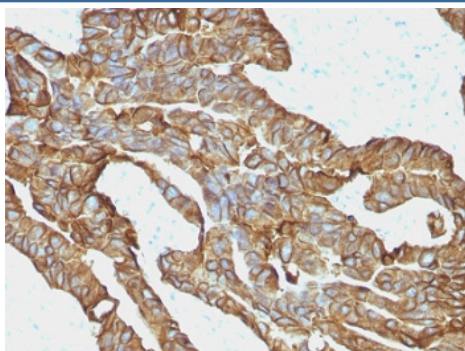
Immunofluorescent staining of human MCF-7 cells with anti-EpCAM antibody (green, clone EGP40/1372) and Reddot nuclear stain (red).



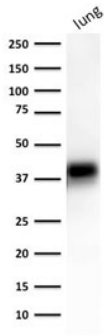
Western blot testing of human 1) HEK293, 2) A431 and 3) HCT116 cell lysate with anti-EpCAM antibody (clone EGP40/1372). Expected molecular weight: ~35 kDa (unmodified), 40-43 kDa (glycosylated).



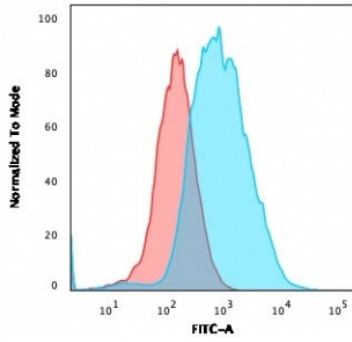
IHC testing of FFPE human hepatocellular carcinoma and anti-EpCAM antibody (clone EGP40/1372). Required HIER: steam sections in pH 9 10mM Tris with 1mM EDTA for 10-20 min.



IHC testing of FFPE human colorectal carcinoma and anti-EpCAM antibody (clone EGP40/1372). Required HIER: steam sections in pH 9 10mM Tris with 1mM EDTA for 10-20 min.



Western blot testing of human lung lysate with anti-EpCAM antibody (clone EGP40/1372).
Expected molecular weight: ~35 kDa (unmodified), 40-43 kDa (glycosylated).



Flow cytometry testing of PFA-fixed human MCF7 cells with anti-EpCAM antibody (clone EGP40/1372); Red=isotype control, Blue= anti-EpCAM antibody.