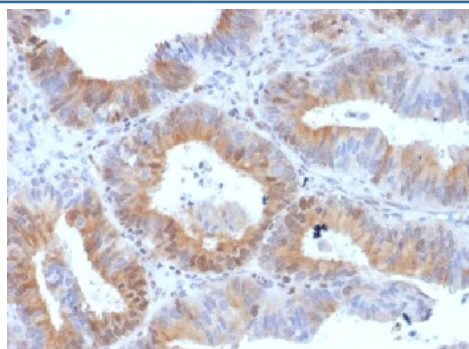


## LHR Antibody / hCG Receptor [clone LHCGR/1417] (V3356)

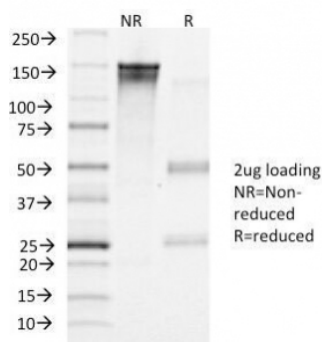
Catalog No.	Formulation	Size
V3356-100UG	0.2 mg/ml in 1X PBS with 0.1 mg/ml BSA (US sourced) and 0.05% sodium azide	100 ug
V3356-20UG	0.2 mg/ml in 1X PBS with 0.1 mg/ml BSA (US sourced) and 0.05% sodium azide	20 ug
V3356SAF-100UG	1 mg/ml in 1X PBS; BSA free, sodium azide free	100 ug

[Bulk quote request](#)

<b>Availability</b>	1-3 business days
<b>Species Reactivity</b>	Human
<b>Format</b>	Purified
<b>Clonality</b>	Monoclonal (mouse origin)
<b>Isotype</b>	Mouse IgG1, kappa
<b>Clone Name</b>	LHCGR/1417
<b>Purity</b>	Protein G affinity chromatography
<b>UniProt</b>	P22888
<b>Localization</b>	Cytoplasmic, cell surface
<b>Applications</b>	ELISA (order BSA/sodium azide-free format for coating) : Flow cytometry : 1-2ug/10 <sup>6</sup> cells Western blot : 0.5-1ug/ml
<b>Limitations</b>	This LHR antibody is available for research use only.



IHC testing of FFPE human ovarian carcinoma with LHR antibody (clone LHCGR/1417).  
Required HIER: boil tissue sections in 10mM citrate buffer, pH 6, for 10-20 min.



SDS-PAGE Analysis of Purified, BSA-Free LHR Antibody (clone LHCGR/1417).  
Confirmation of Integrity and Purity of the Antibody.

## Description

Recognizes a protein of 78-85 kDa, which is identified as the receptor for Luteinizing hormone / Choriogonadotropin (LHR/CGR). Luteinizing hormone plays a role in spermatogenesis and ovulation by stimulating the testes and ovaries to produce steroids. Choriogonadotropin production in the placenta maintains estrogen and progesterone levels during the first trimester of pregnancy. Ovaries and testes abundantly express luteinizing hormone / choriogonadotropin receptor (LHCGR) as a seven transmembrane, G protein-coupled receptor glycoprotein. LHCGR influences the protective effect of pregnancy and Gonadotropin against breast cancer. The expression of LHCGR on breast carcinoma correlates in part to the degree of tumor differentiation. LHCGR -positive breast tumors occur more frequently in tumors with greater cell differentiation in premenopausal women.

## Application Notes

Optimal dilution of the LHR antibody should be determined by the researcher.

## Immunogen

A partial recombinant protein from the N-terminal region of human Luteinizing hormone / Choriogonadotropin receptor was used as the immunogen for the LHR antibody.

## Storage

Store the LHR antibody at 2-8°C (with azide) or aliquot and store at -20°C or colder (without azide).