

## Connexin 32 Antibody / GJB1 [clone M12.13] (V3306)

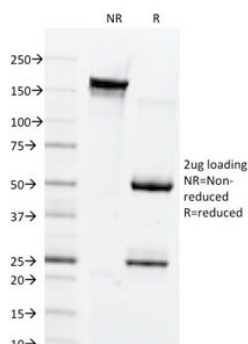
Catalog No.	Formulation	Size
V3306-100UG	0.2 mg/ml in 1X PBS with 0.1 mg/ml BSA (US sourced) and 0.05% sodium azide	100 ug
V3306-20UG	0.2 mg/ml in 1X PBS with 0.1 mg/ml BSA (US sourced) and 0.05% sodium azide	20 ug
V3306SAF-100UG	1 mg/ml in 1X PBS; BSA free, sodium azide free	100 ug



Citations (22)

[Bulk quote request](#)

Availability	1-3 business days
Species Reactivity	Human, Mouse, Rat
Format	Purified
Clonality	Monoclonal (mouse origin)
Isotype	Mouse IgG
Clone Name	M12.13
Purity	Protein G affinity chromatography
UniProt	P08034
Localization	Cell surface, cytoplasmic
Applications	Immunofluorescence : 1-2ug/ml Flow cytometry : 0.5-1ug/10 <sup>6</sup> cells Western blot : 0.5-1ug/ml Immunohistochemistry (Frozen) : 0.5-1ug/ml for 30 min at RT
Limitations	This Connexin 32 antibody is available for research use only.



SDS-PAGE Analysis of Purified, BSA-Free Connexin 32 Antibody (clone M12.13). Confirmation of Integrity and Purity of the Antibody.

## Description

This Ab recognizes a protein of 27-32kDa, identified as Connexin 32. The connexin family of proteins forms hexameric complexes called connexons that facilitate movement of low molecular weight proteins between cells via gap junctions. Connexin proteins share a common topology of four transmembrane  $\alpha$ -helical domains, two extracellular loops, a cytoplasmic loop and cytoplasmic N- and C-termini. Many of the key functional differences arise from specific amino-acid substitutions in the most highly conserved domains, the transmembrane and extracellular regions. Each of the approximately 20-connexin isoforms produces channels with distinct permeability and electrical and chemical sensitivities; therefore, one connexin usually cannot fully substitute for another.

## Application Notes

Optimal dilution of the Connexin 32 antibody should be determined by the researcher.

## Immunogen

Rat junctional complexes were used as the immunogen for the Connexin 32 antibody. The epitope is known to be located in the cytoplasmic loop (Ref 1).

## Storage

Store the Connexin 32 antibody at 2-8°C (with azide) or aliquot and store at -20°C or colder (without azide).

## References (1)