

## Lambda Light Chain Antibody [clone N10/2] (V3261)

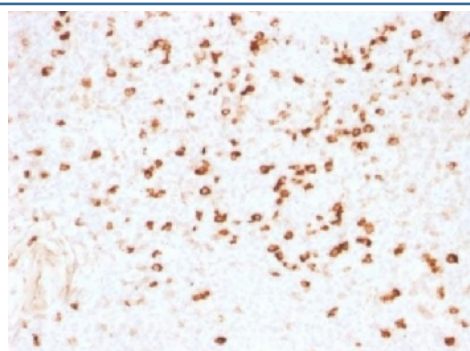
Catalog No.	Formulation	Size
V3261-100UG	0.2 mg/ml in 1X PBS with 0.1 mg/ml BSA (US sourced) and 0.05% sodium azide	100 ug
V3261-20UG	0.2 mg/ml in 1X PBS with 0.1 mg/ml BSA (US sourced) and 0.05% sodium azide	20 ug
V3261SAF-100UG	1 mg/ml in 1X PBS; BSA free, sodium azide free	100 ug



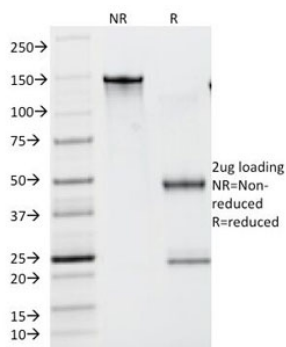
Citations (20)

[Bulk quote request](#)

Availability	1-3 business days
Species Reactivity	Human
Format	Purified
Clonality	Monoclonal (mouse origin)
Isotype	Mouse IgG1, kappa
Clone Name	N10/2
Purity	Protein G affinity chromatography
UniProt	P01701, P01842
Localization	Cell Surface, Cytoplasmic and Secreted
Applications	Flow cytometry : 0.5-1ug/10 <sup>6</sup> cells Immunofluorescence : 1-2ug/ml Western blot : 0.5-1ug/ml Immunohistochemistry (FFPE) : 0.5-1ug/ml for 30 min at RT
Limitations	This Lambda Light Chain antibody is available for research use only.



IHC testing of FFPE human tonsil stained with Lambda Light Chain antibody (clone N10/2).  
Required HIER: boil tissue sections in 10mM citrate buffer, pH 6, for 10-20 min.



SDS-PAGE Analysis of Purified, BSA-Free Lambda Light Chain Antibody (clone N10/2).  
Confirmation of Integrity and Purity of the Antibody.

## Application Notes

The optimal dilution of the Lambda Light Chain antibody for each application should be determined by the researcher.

## Immunogen

IgG purified from human serum was used as the immunogen for this Lambda Light Chain antibody.

## Storage

Store the Lambda Light Chain antibody at 2-8°C (with azide) or aliquot and store at -20°C or colder (without azide).