

Plasma Cell Marker Antibody [clone LIV3G11] (V2360)

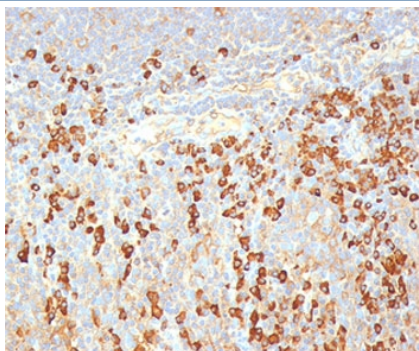
| Catalog No. | Formulation | Size |
|----------------|---|--------|
| V2360-100UG | 0.2 mg/ml in 1X PBS with 0.1 mg/ml BSA (US sourced) and 0.05% sodium azide | 100 ug |
| V2360-20UG | 0.2 mg/ml in 1X PBS with 0.1 mg/ml BSA (US sourced) and 0.05% sodium azide | 20 ug |
| V2360SAF-100UG | 1 mg/ml in 1X PBS; BSA free, sodium azide free | 100 ug |
| V2360IHC-7ML | Prediluted in 1X PBS with 0.1 mg/ml BSA (US sourced) and 0.05% sodium azide; *For IHC use only* | 7 ml |



Citations (2)

[Bulk quote request](#)

| | |
|--------------------|---|
| Species Reactivity | Human |
| Format | Purified |
| Clonality | Monoclonal (mouse origin) |
| Isotype | Mouse IgG2a, kappa |
| Clone Name | LIV3G11 |
| Purity | Protein G affinity chromatography |
| Buffer | 1X PBS, pH 7.4 |
| Gene ID | Unknown |
| Localization | Cytoplasmic |
| Applications | Immunohistochemistry (FFPE) : 0.1-0.2ug/ml for 30 min at RT |
| Limitations | This Plasma cell marker antibody is available for research use only. |



FFPE human tonsil stained with plasma cell marker antibody (LIV3G11).

Description

This antibody recognizes an intra-cytoplasmic marker antigen which shows a very high degree of specificity for plasma cells. This marker protein is present in normal as well as neoplastic plasma cells. Plasma cells, which are large lymphocytes derived from an antigen-specific B cell, secrete antibodies and are responsible for humoral immunity. Plasma cells differentiate from B cells upon stimulation by CD4+ lymphocytes. The B cell acts as an antigen-presenting cell (APC), consuming an offending pathogen, which is taken up by the B cell by phagocytosis and broken down within proteosomes. Plasma cells contain basophilic cytoplasm; their nucleus contains heterochromatin organized in a characteristic cartwheel arrangement. This marker antibody superbly recognizes normal and neoplastic plasma cells in routine formalin/paraffin tissue sections. It is of potential value in identifying myeloma or plasmacytoma in bone marrow or other tissues. It also helps differentiate lympho-plasmacytoid lymphoma from lymphocytic and follicular lymphoma. Note that this plasma cell marker antibody is not suitable for staining frozen tissues.

Immunogen

Pancreatic cancer-related mucin was used as the immunogen for this Plasma cell marker antibody.

Storage

Store the Plasma cell marker antibody at 2-8°C (with azide) or aliquot and store at -20°C or colder (without azide).

References (1)