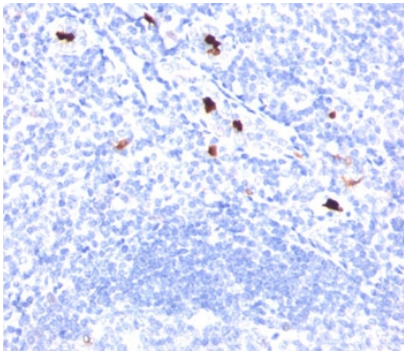


## Myeloid Cell Marker Antibody [clone BM-1] (V2356)

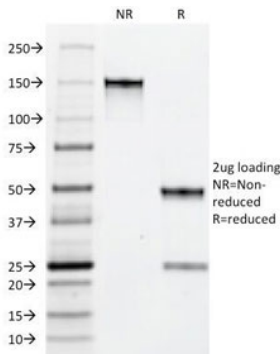
Catalog No.	Formulation	Size
V2356-100UG	0.2 mg/ml in 1X PBS with 0.1 mg/ml BSA (US sourced) and 0.05% sodium azide	100 ug
V2356-20UG	0.2 mg/ml in 1X PBS with 0.1 mg/ml BSA (US sourced) and 0.05% sodium azide	20 ug
V2356SAF-100UG	1 mg/ml in 1X PBS; BSA free, sodium azide free	100 ug
V2356IHC-7ML	Prediluted in 1X PBS with 0.1 mg/ml BSA (US sourced) and 0.05% sodium azide; *For IHC use only*	7 ml

[Bulk quote request](#)

<b>Species Reactivity</b>	Human
<b>Format</b>	Purified
<b>Clonality</b>	Monoclonal (mouse origin)
<b>Isotype</b>	Mouse IgG1, kappa
<b>Clone Name</b>	BM-1
<b>Purity</b>	Protein G affinity chromatography
<b>Buffer</b>	1X PBS, pH 7.4
<b>Gene ID</b>	Unknown
<b>Localization</b>	Cytoplasmic and nuclear
<b>Applications</b>	Flow cytometry : 0.5-1ug/10 <sup>6</sup> cells Immunofluorescence : 1-2ug/ml Immunohistochemistry (FFPE) : 0.5-1ug/ml for 30 min at RT
<b>Limitations</b>	This <b>Myeloid cell marker antibody</b> is available for research use only.



Formalin/paraffin human tonsil stained with Myeloid cell marker antibody (BM-1).



SDS-PAGE Analysis of Purified, BSA-Free Myeloid Cell Marker Antibody (clone BM-1). Confirmation of Integrity and Purity of the Antibody.

## Description

This antibody recognizes a 183kDa protein with DNA-binding characteristics, which is identified as a myeloid cell specific antigen. Clone BM-1 antibody reacts with myeloid precursor cells and granulocytes in bone marrow. Its antigen appears to be restricted to M2 and M3 acute myelogenous leukemia (AML) subtypes. This type of marker is useful in the identification of different levels of cellular differentiation. BM-1 and BM-2 antibodies react with early precursor and mature forms of human myeloid cells. This mAb is useful in the identification of myelogenous leukemias, distinguishing granulocytic sarcomas from lymphoid malignancies and also in the study of differentiation and transformation of human myeloid cells. The biological function of the marker protein is not clear, although it has been proposed that it may play a role in cell differentiation.

## Immunogen

Human peripheral blood mononuclear cells were used as the immunogen for this Myeloid cell marker antibody.

## Storage

Store the Myeloid cell marker antibody at 2-8°C (with azide) or aliquot and store at -20°C or colder (without azide).

## References (1)