

## Hep Par 1 Antibody / Hepatocyte Paraffin 1 [clone OCH1E5] (V2341)

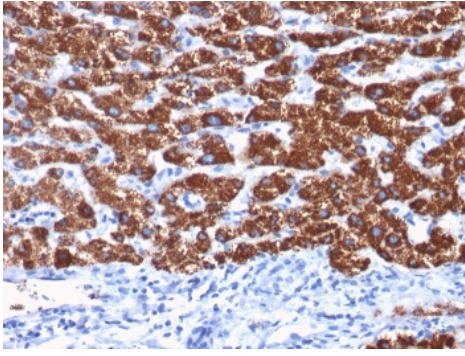
Catalog No.	Formulation	Size
V2341-100UG	0.2 mg/ml in 1X PBS with 0.1 mg/ml BSA (US sourced) and 0.05% sodium azide	100 ug
V2341-20UG	0.2 mg/ml in 1X PBS with 0.1 mg/ml BSA (US sourced) and 0.05% sodium azide	20 ug
V2341SAF-100UG	1 mg/ml in 1X PBS; BSA free, sodium azide free	100 ug
V2341IHC-7ML	Prediluted in 1X PBS with 0.1 mg/ml BSA (US sourced) and 0.05% sodium azide; *For IHC use only*	7 ml



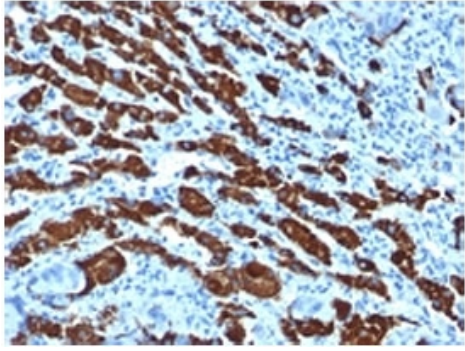
Citations (13)

[Bulk quote request](#)

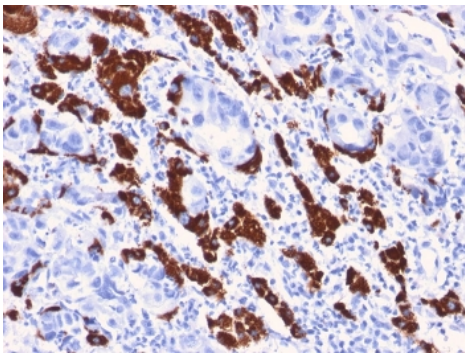
<b>Species Reactivity</b>	Human
<b>Format</b>	Purified
<b>Clonality</b>	Monoclonal (mouse origin)
<b>Isotype</b>	Mouse IgG1, kappa
<b>Clone Name</b>	OCH1E5
<b>Purity</b>	Protein G affinity
<b>Buffer</b>	1X PBS, pH 7.4
<b>Gene ID</b>	Unknown
<b>Localization</b>	Finely granular cytoplasmic
<b>Applications</b>	Immunofluorescence : 0.5-1ug/ml Immunohistochemistry (FFPE) : 1-2ug/ml for 30 min at RT
<b>Limitations</b>	This Hep Par 1 antibody is available for research use only.



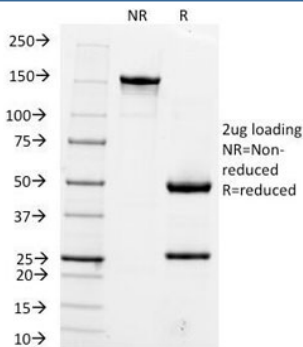
IHC staining of human hepatocellular carcinoma with Hep Par 1 antibody (clone OCH1E5).  
HIER: boil tissue sections in pH 9 10mM Tris with 1mM EDTA for 20 min and allow to cool before testing.



IHC staining of human hepatocellular carcinoma with Hep Par 1 antibody (clone OCH1E5).  
HIER: boil tissue sections in pH 9 10mM Tris with 1mM EDTA for 20 min and allow to cool before testing.



IHC staining of human liver with Hep Par 1 antibody (clone OCH1E5). HIER: boil tissue sections in pH 9 10mM Tris with 1mM EDTA for 20 min and allow to cool before testing.



SDS-PAGE analysis of purified, BSA-free Hep Par 1 antibody (clone OCH1E5) as confirmation of integrity and purity.

## Description

Hepatocyte Specific Antigen, also called Hepatocyte Paraffin 1 or Hep Par 1, localizes to the mitochondria of hepatocytes. It is a sensitive marker for distinguishing hepatocellular carcinomas (HCC) from other metastatic carcinomas as well as cholangio-carcinomas. HCC's occur primarily in the stomach, but they are also found in many other organs. The Hepatocyte Specific Antigen may also be a useful marker for intestinal metaplasia. Reportedly, strong expression of the Hepatocyte Specific Antigen correlates with smaller tumor size and longer patient survival. Occasionally, Hepatocyte Specific Antigen is also found in gastric carcinomas as well as in a few other non-hepatic tumors.

## Application Notes

The concentration stated for each application is a general starting point. Variations in protocols, secondaries and substrates may require the Hep Par 1 antibody to be titered up or down for optimal performance.

1. The prediluted format is supplied in a dropper bottle and is optimized for use in IHC. After epitope retrieval step (if required), drip mAb solution onto the tissue section and incubate at RT for 30 min.

## Immunogen

Extract of a formalin-fixed, rejected-allograft of a human liver was used as the immunogen for this Hep Par 1 antibody.

## Storage

Store the Hep Par 1 antibody at 2-8oC (with azide) or aliquot and store at -20oC or colder (without azide).

## Alternate Names

HSA

## References (2)