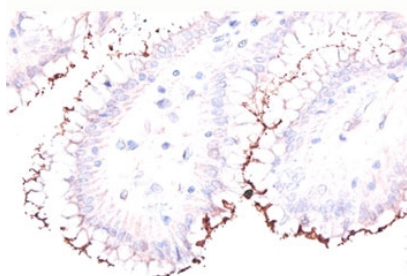


Helicobacter Pylori Antibody (V2340)

Catalog No.	Formulation	Size
V2340-100UG	0.2 mg/ml in 1X PBS with 0.1 mg/ml BSA (US sourced) and 0.05% sodium azide	100 ug
V2340-20UG	0.2 mg/ml in 1X PBS with 0.1 mg/ml BSA (US sourced) and 0.05% sodium azide	20 ug
V2340SAF-100UG	1 mg/ml in 1X PBS with 0.05% sodium azide; BSA-free	100 ug

[Bulk quote request](#)

Species Reactivity	Helicobacter pylori
Format	Purified
Clonality	Polyclonal (rabbit origin)
Isotype	Rabbit IgG
Purity	Protein A affinity chromatography
Buffer	1X PBS, pH 7.4
Gene ID	Not Applicable
Localization	Cell surface and cytoplasm
Applications	Immunohistochemistry (FFPE) : 1-2ug/ml for 30 min at RT
Limitations	This Helicobacter pylori antibody is available for research use only.



Formalin/paraffin human stomach stained with Helicobacter pylori antibody.

Description

The spiral shaped bacterium *Helicobacter pylori* is strongly associated with inflammation of the stomach and is also implicated in the development of gastric malignancy. This bacteria is known to cause peptic ulcers and chronic gastritis in human. It is associated with duodenal ulcers and may be involved in development of adenocarcinoma and low-grade lymphoma of mucosa associated lymphoid tissue in the stomach. This antibody stains the individual *Helicobacter pylori* bacterium when it presents on the surface of the epithelium or in the cytoplasm of the epithelial cells in biopsy tissue sections from the antrum and body of the stomach.

Immunogen

Total sonicate of *Helicobacter pylori* was used as the immunogen for this antibody.

Storage

Store the *Helicobacter Pylori* antibody at 2-8°C (with azide) or aliquot and store at -20°C or colder (without azide).

Alternate Names

H. pylori, *Helicobacter Pylori* Antibody

References (2)