

CD11b Antibody / MAC-1 / ITGAM [clone M1/70] (V2161)

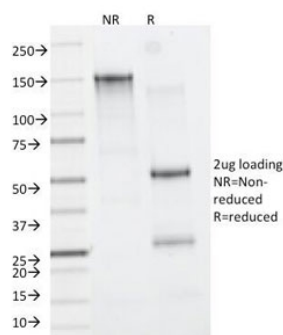
Catalog No.	Formulation	Size
V2161-100UG	0.2 mg/ml in 1X PBS with 0.1 mg/ml BSA (US sourced) and 0.05% sodium azide	100 ug
V2161-20UG	0.2 mg/ml in 1X PBS with 0.1 mg/ml BSA (US sourced) and 0.05% sodium azide	20 ug
V2161SAF-100UG	1 mg/ml in 1X PBS; BSA free, sodium azide free	100 ug



Citations (11)

[Bulk quote request](#)

Species Reactivity	Human, Mouse
Format	Purified
Clonality	Monoclonal (rat origin)
Isotype	Rat IgG2b, kappa
Clone Name	M1/70
Purity	Protein G affinity chromatography
Buffer	1X PBS, pH 7.4
Gene ID	3684
Localization	Cell surface, cytoplasm
Applications	Flow cytometry : 1-2ug/10 ⁶ cells Immunofluorescence : 1-2ug/ml Functional studies (order BSA/sodium azide-free format) :
Limitations	This CD11b antibody is available for research use only.



SDS-PAGE Analysis of Purified, BSA-Free CD11b Antibody (clone M1/70). Confirmation of Integrity and Purity of the Antibody.

Description

CD11b is a cell adhesion molecule that acts as a receptor for cell surface ligands such as intracellular adhesion molecules (ICAMs) or soluble ligands. Integrins are heterodimeric proteins that contain an α chain and β chain. Integrin α -M (CD11b) combines with the Integrin β -2 (CD18) to form a leukocyte-specific integrin referred to as macrophage receptor 1 (Mac-1), or inactivated-C3b (iC3b) receptor 3 (CR3). Integrin α -M/ β -2 is important in the adherence of neutrophils and monocytes to stimulated endothelium, and also in the phagocytosis of complement coated particles.

Application Notes

The concentration stated for each application is a general starting point. Variations in protocols, secondaries and substrates may require the CD11b antibody to be titrated up or down for optimal performance.

Immunogen

B10 mouse spleen cells enriched for T lymphocytes were used as the immunogen for this CD11b antibody.

Storage

Store the CD11b antibody at 2-8°C (with azide) or aliquot and store at -20°C or colder (without azide).

Alternate Names

Granulocyte marker

References (2)