

## Lambda Light Chain Antibody [clone LcN-2] (V2153)

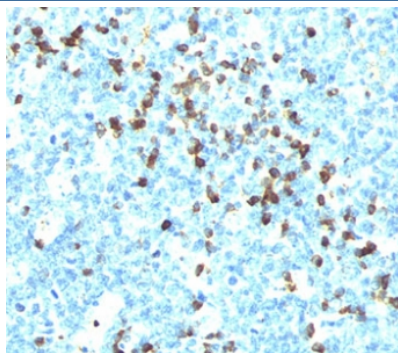
Catalog No.	Formulation	Size
V2153-100UG	0.2 mg/ml in 1X PBS with 0.1 mg/ml BSA (US sourced) and 0.05% sodium azide	100 ug
V2153-20UG	0.2 mg/ml in 1X PBS with 0.1 mg/ml BSA (US sourced) and 0.05% sodium azide	20 ug
V2153SAF-100UG	1 mg/ml in 1X PBS; BSA free, sodium azide free	100 ug
V2153IHC-7ML	Prediluted in 1X PBS with 0.1 mg/ml BSA (US sourced) and 0.05% sodium azide; *For IHC use only*	7 ml



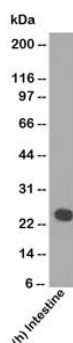
Citations (1)

[Bulk quote request](#)

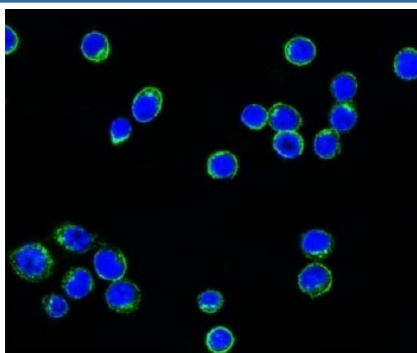
<b>Species Reactivity</b>	Human
<b>Format</b>	Purified
<b>Clonality</b>	Monoclonal (mouse origin)
<b>Isotype</b>	Mouse IgG2a, kappa
<b>Clone Name</b>	LcN-2
<b>Purity</b>	Protein G affinity chromatography
<b>Buffer</b>	1X PBS, pH 7.4
<b>Gene ID</b>	3535
<b>Localization</b>	Cell surface, cytoplasmic and secreted
<b>Applications</b>	Flow cytometry : 0.5-1ug/10 <sup>6</sup> cells Immunofluorescence : 1-2ug/ml Western blot : 0.5-1ug/ml Immunohistochemistry (FFPE) : 0.25-0.5ug/ml for 30 min at RT
<b>Limitations</b>	This <b>Lambda Light Chain antibody</b> is available for research use only.



IHC testing of tonsil stained with Lambda Light Chain antibody (LcN-2). Note cell membrane & cytoplasmic staining.



Western blot testing of human samples using Lambda Light Chain antibody (LcN-2).



Confocal immunofluorescent testing of Ramos cells with Alexa Fluor 488 conjugated Lambda Light Chain antibody (green) and DAPI nuclear counterstain (blue).

## Description

This antibody is specific to lambda light chain of immunoglobulin and shows no cross-reaction with kappa light chain or any of the five heavy chains. In mammals, the two light chains in an antibody are always identical, with only one type of light chain, kappa or lambda. In general the ratio of Kappa to Lambda is 3:1. However, with the occurrence of multiple myeloma or other B-cell malignancies this ratio is disturbed. Antibody to the lambda light chain is reportedly useful in the identification of leukemias, plasmacytomas, and certain non-Hodgkin's lymphomas. Demonstration of clonality in lymphoid infiltrates indicates that the infiltrate is malignant.

## Immunogen

Purified human Ig was used as the immunogen for this Lambda Light Chain antibody.

## Storage

Store the Lambda Light Chain antibody at 2-8°C (with azide) or aliquot and store at -20°C or colder (without azide).

## References (1)

