

HSP60 Antibody / HSPD1 [clone LK2] (V2137)

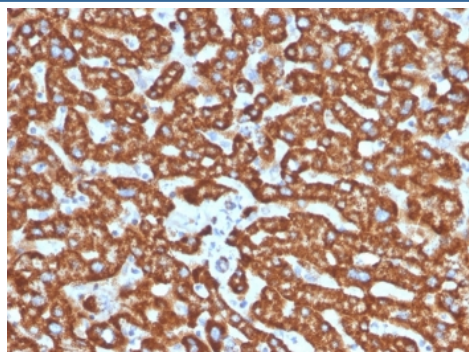
| Catalog No. | Formulation | Size |
|----------------|--|--------|
| V2137-100UG | 0.2 mg/ml in 1X PBS with 0.1 mg/ml BSA (US sourced) and 0.05% sodium azide | 100 ug |
| V2137-20UG | 0.2 mg/ml in 1X PBS with 0.1 mg/ml BSA (US sourced) and 0.05% sodium azide | 20 ug |
| V2137SAF-100UG | 1 mg/ml in 1X PBS; BSA free, sodium azide free | 100 ug |



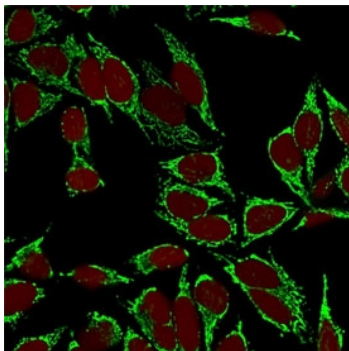
Citations (9)

[Bulk quote request](#)

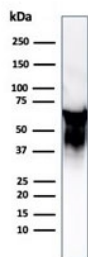
| | |
|--------------------|--|
| Species Reactivity | Human |
| Format | Purified |
| Clonality | Monoclonal (mouse origin) |
| Isotype | Mouse IgG1, kappa |
| Clone Name | LK2 |
| Purity | Protein G affinity chromatography |
| Gene ID | 3329 |
| Localization | Mitochondria in cytoplasm |
| Applications | Immunofluorescence : 1-2ug/ml Western blot : 1-2ug/ml Immunohistochemistry (FFPE) : 1-2ug/ml |
| Limitations | This HSP60 antibody is available for research use only. |



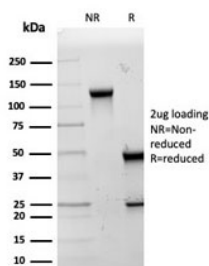
IHC staining of FFPE human liver tissue with HSP60 antibody (clone LK2). HIER: boil tissue sections in pH 9 10mM Tris with 1mM EDTA for 20 min and allow to cool before testing.



Immunofluorescent staining of MeOH-fixed human HeLa cells with HSP60 antibody (clone LK2, green) and Reddot nuclear stain (red).



Western blot testing of Hep-2 cell lysate with HSP60 antibody (clone LK2).



SDS-PAGE analysis of purified, BSA-free HSP60 antibody (clone LK2) as confirmation of integrity and purity.

Description

This antibody recognizes a 60kDa protein, identified as the heat shock protein 60 (hsp60). The antibody's epitope is localized between amino acids 383-419 of human HSP60. A wide variety of environmental and pathophysiological stressful conditions trigger the synthesis of a family of proteins known as heat shock proteins (hsp's), more appropriately called as stress response proteins (srp's). HSP60 is a potential antigen in a number of autoimmune diseases. In human arthritis and in experimentally induced arthritis in animals, disease development coincides with the development of immune reactivity directed against not only bacterial HSP60, but also against its mammalian homolog. Clone LK2 antibody, unlike LK1 antibody, recognizes both mammalian and bacterial HSP60.

Application Notes

The concentration stated for each application is a general starting point. Variations in protocols, secondaries and substrates may require the antibody to be titrated up or down for optimal performance.

Immunogen

Recombinant human HSP60 protein was used as the immunogen for this antibody.

Storage

Store the HSP60 antibody at 2-8oC (with azide) or aliquot and store at -20oC or colder (without azide).

Alternate Names

60kDa chaperonin, 60kDa heat shock protein mitochondrial, Chaperonin, 60-KD (CPN60), GROEL, HLD4, HSP65, HSPD1, HuCHA60, Mitochondrial matrix protein P1, P60 lymphocyte protein, Short heat shock protein 60 Hsp60s1, Spastic paraplegia 13 (SPG13), HSP60 antibody

References (1)

Ordering:Phone:858.663.9055 | Fax:1.267.821.0800 | Email:info@nsjbio.com

Copyright © NSJ Bioreagents. All rights reserved