

HSP27 Antibody [clone G3.1] (V2134)

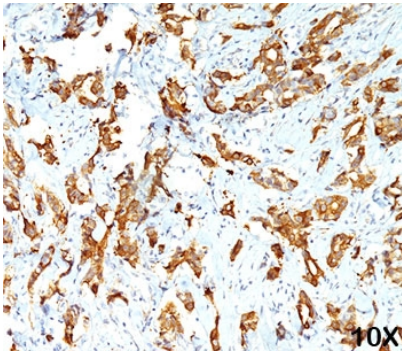
| Catalog No. | Formulation | Size |
|----------------|---|--------|
| V2134-100UG | 0.2 mg/ml in 1X PBS with 0.1 mg/ml BSA (US sourced) and 0.05% sodium azide | 100 ug |
| V2134-20UG | 0.2 mg/ml in 1X PBS with 0.1 mg/ml BSA (US sourced) and 0.05% sodium azide | 20 ug |
| V2134SAF-100UG | 1 mg/ml in 1X PBS; BSA free, sodium azide free | 100 ug |
| V2134IHC-7ML | Prediluted in 1X PBS with 0.1 mg/ml BSA (US sourced) and 0.05% sodium azide; *For IHC use only* | 7 ml |



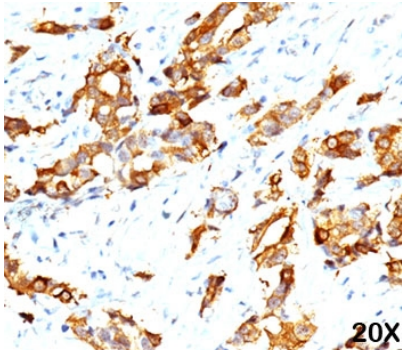
Citations (8)

[Bulk quote request](#)

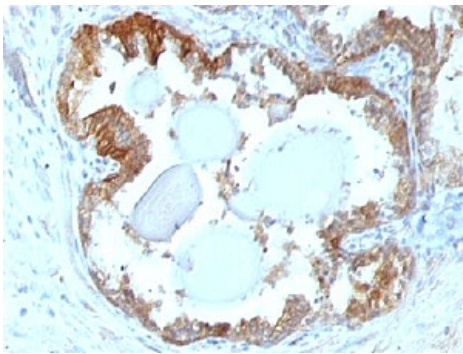
| | |
|---------------------------|---|
| Species Reactivity | Human, Mouse, Rat |
| Format | Purified |
| Clonality | Monoclonal (mouse origin) |
| Isotype | Mouse IgG1, kappa |
| Clone Name | G3.1 |
| Purity | Protein G affinity chromatography |
| Buffer | 1X PBS, pH 7.4 |
| UniProt | P04792 |
| Localization | Predominantly cytoplasmic with some nuclear |
| Applications | Flow cytometry : 1-2ug/10 ⁶ cells Immunofluorescence : 1-2ug/ml Western blot : 1-2ug/ml Immunohistochemistry (FFPE) : 1-2ug/ml for 30 min at RT |
| Limitations | This HSP27 antibody is available for research use only. |



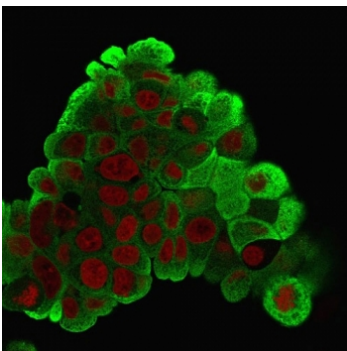
IHC testing of FFPE human breast carcinoma (10X) stained with HSP27 antibody (clone G3.1).



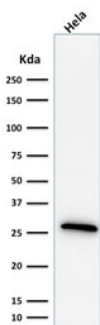
IHC testing of FFPE breast carcinoma (20X) stained with HSP27 antibody (clone G3.1).



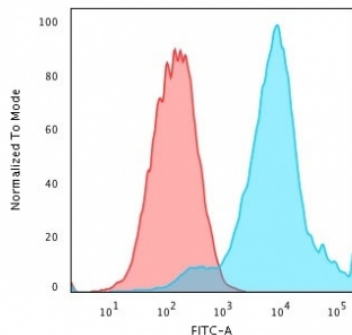
IHC testing of FFPE human prostate carcinoma and HSP27 antibody (clone G3.1).



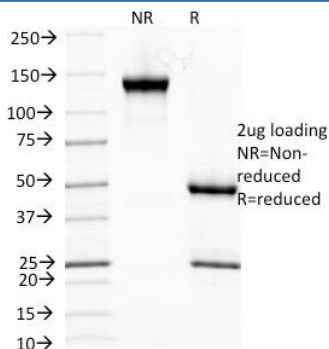
Immunofluorescent staining of PFA-fixed human MCF7 cells with HSP27 antibody (clone G3.1, green) and Reddot nuclear stain (red).



Western blot testing of human HeLa cell lysate with HSP27 antibody (clone G3.1). Expected molecular weight: 24-29 kDa.



Flow cytometry testing of PFA-fixed human MCF7 cells with HSP27 antibody (clone G3.1); Red=isotype control, Blue= HSP27 antibody.



SDS-PAGE analysis of purified, BSA-free HSP27 antibody (clone G3.1) as confirmation of integrity and purity.

Description

This antibody recognizes a 24-27kDa estrogen-regulated protein, identified as heat shock protein 27 (hsp27). HSP27 was recently found to be identical to the estrogen-induced 'p29' and '24K' protein. About 50% of breast carcinomas are positive for HSP27, especially those that are also positive for estrogen and/or progesterone receptor. HSP27 has also been implicated in drug resistance in cancer cells.

Immunogen

Partially purified human HSP27 (earlier called 24K) from breast cancer MCF-7 cells was used as the immunogen for this antibody.

Storage

Store the HSP27 antibody at 2-8°C (with azide) or aliquot and store at -20°C or colder (without azide).

References (1)