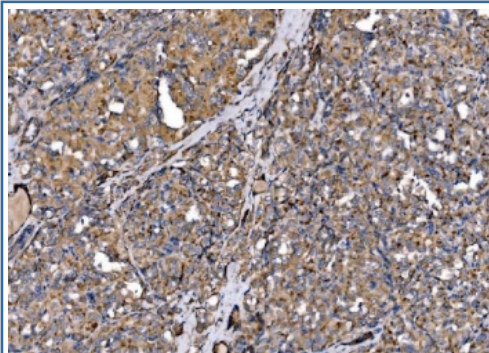


## MLXIP Antibody / MLX-interacting protein (RQ6719)

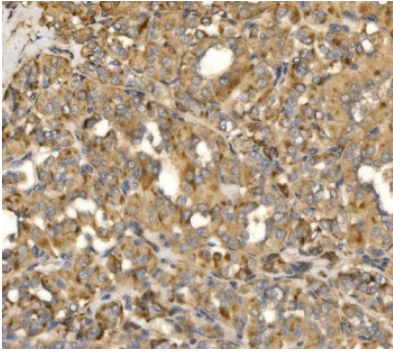
Catalog No.	Formulation	Size
RQ6719	0.5mg/ml if reconstituted with 0.2ml sterile DI water	100 ug

**Bulk quote request**

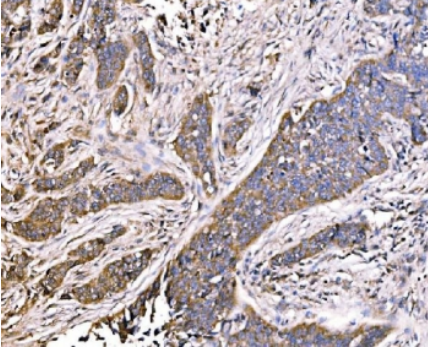
<b>Availability</b>	1-3 business days
<b>Species Reactivity</b>	Human, Rat
<b>Format</b>	Antigen affinity purified
<b>Clonality</b>	Polyclonal (rabbit origin)
<b>Isotype</b>	Rabbit IgG
<b>Purity</b>	Antigen affinity purified
<b>Buffer</b>	Lyophilized from 1X PBS with 2% Trehalose
<b>UniProt</b>	Q9HAP2
<b>Localization</b>	Cytoplasmic, nuclear
<b>Applications</b>	Western blot : 1-2ug/ml Immunohistochemistry (FFPE) : 2-5ug/ml Immunofluorescence (FFPE) : 5ug/ml Flow cytometry : 1-3ug/million cells Direct ELISA : 0.1-0.5ug/ml
<b>Limitations</b>	This MLXIP antibody is available for research use only.



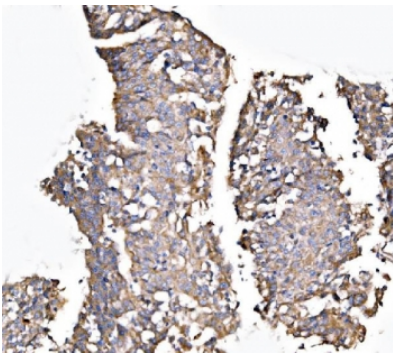
IHC staining of FFPE human thyroid papillary carcinoma tissue with MLXIP antibody. HIER: boil tissue sections in pH8 EDTA for 20 min and allow to cool before testing.



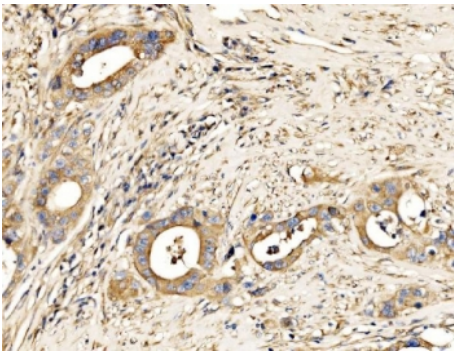
IHC staining of FFPE human thyroid papillary carcinoma tissue with MLXIP antibody. HIER: boil tissue sections in pH8 EDTA for 20 min and allow to cool before testing.



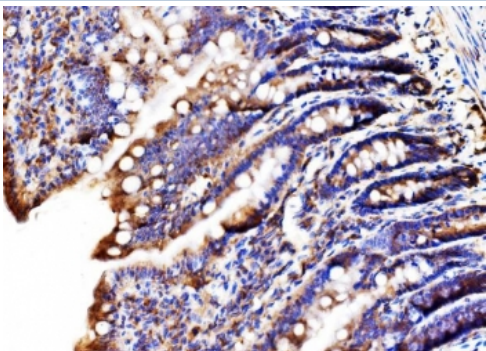
IHC staining of FFPE human lung cancer tissue with MLXIP antibody. HIER: boil tissue sections in pH8 EDTA for 20 min and allow to cool before testing.



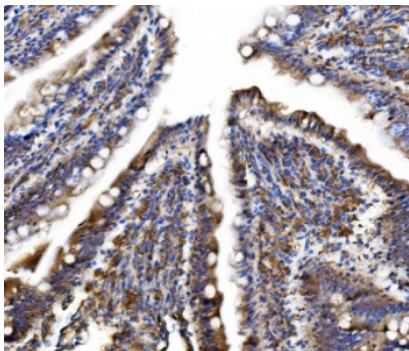
IHC staining of FFPE human laryngeal squamous cell carcinoma tissue with MLXIP antibody. HIER: boil tissue sections in pH8 EDTA for 20 min and allow to cool before testing.



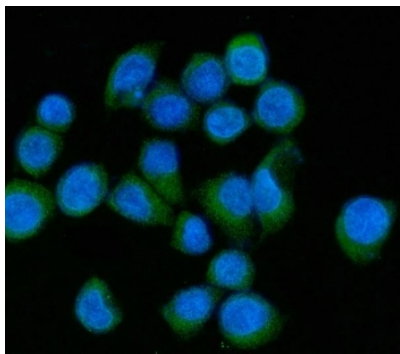
IHC staining of FFPE human appendiceal adenocarcinoma tissue with MLXIP antibody. HIER: boil tissue sections in pH8 EDTA for 20 min and allow to cool before testing.



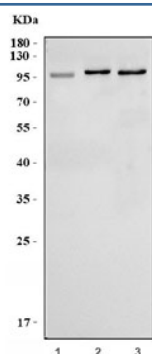
IHC staining of FFPE rat colon tissue with MLXIP antibody. HIER: boil tissue sections in pH8 EDTA for 20 min and allow to cool before testing.



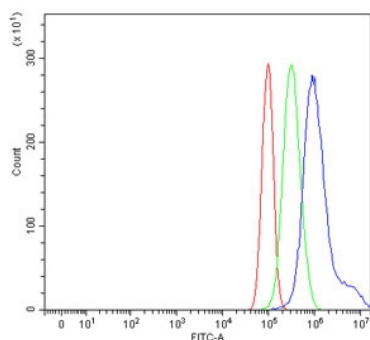
IHC staining of FFPE rat colon tissue with MLXIP antibody. HIER: boil tissue sections in pH8 EDTA for 20 min and allow to cool before testing.



Immunofluorescent staining of FFPE human SiHa cells with MLXIP antibody (green) and DAPI nuclear stain (blue). HIER: steam section in pH6 citrate buffer for 20 min.



Western blot testing of human 1) HepG2, 2) K562 and 3) HEK293 cell lysate with MLXIP antibody. Predicted molecular weight ~101 kDa.



Flow cytometry testing of human PC-3 cells with MLXIP antibody at 1ug/million cells (blocked with goat sera); Red=cells alone, Green=isotype control, Blue= MLXIP antibody.

## Description

This gene encodes a protein that functions as part of a heterodimer to activate transcription. The encoded protein forms a heterodimer with Max-like protein X (MLX) and is involved in the regulation of genes in response to cellular glucose levels.

## Application Notes

Optimal dilution of the MLXIP antibody should be determined by the researcher.

## Immunogen

Recombinant human protein (amino acids H88-P348) was used as the immunogen for the MLXIP antibody.

## Storage

After reconstitution, the MLXIP antibody can be stored for up to one month at 4oC. For long-term, aliquot and store at -20oC. Avoid repeated freezing and thawing.