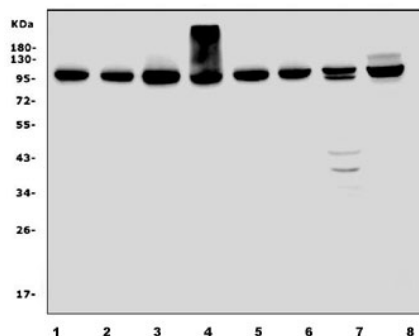


## Elongation factor 2 Antibody / EEF2 (RQ6253)

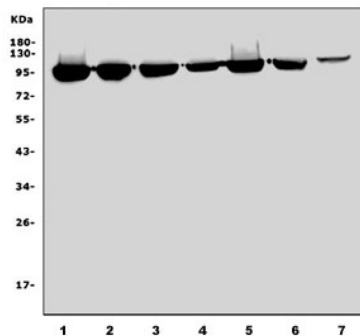
Catalog No.	Formulation	Size
RQ6253	0.5mg/ml if reconstituted with 0.2ml sterile DI water	100 ug

**Bulk quote request**

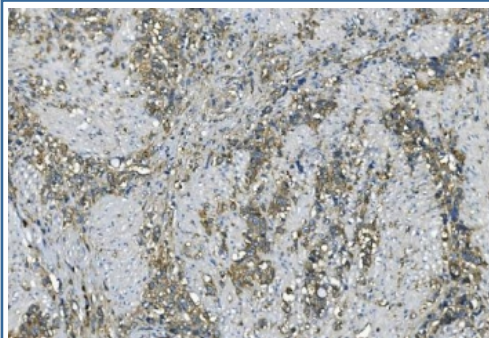
<b>Availability</b>	1-3 business days
<b>Species Reactivity</b>	Human, Mouse, Rat, Monkey
<b>Format</b>	Antigen affinity purified
<b>Clonality</b>	Polyclonal (rabbit origin)
<b>Isotype</b>	Rabbit IgG
<b>Purity</b>	Affinity purified
<b>Buffer</b>	Lyophilized from 1X PBS with 2% Trehalose
<b>UniProt</b>	P13639
<b>Localization</b>	Cytoplasmic, nuclear
<b>Applications</b>	Western blot : 1-2ug/ml Immunohistochemistry (FFPE) : 2-5ug/ml Immunofluorescence : 5ug/ml Flow cytometry : 1-3ug/million cells
<b>Limitations</b>	This Elongation factor 2 antibody is available for research use only.



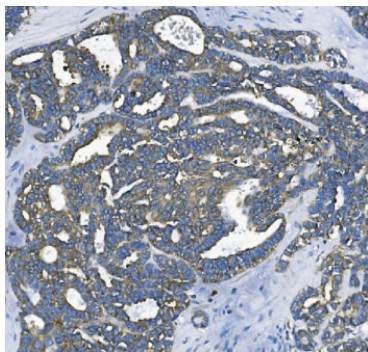
Western blot testing of rat 1) kidney, 2) lung, 3) stomach, 4) C6 and mouse 5) kidney, 6) lung, 7) stomach and 8) NIH 3T3 cell lysate with Elongation factor 2 antibody. Predicted molecular weight ~95 kDa.



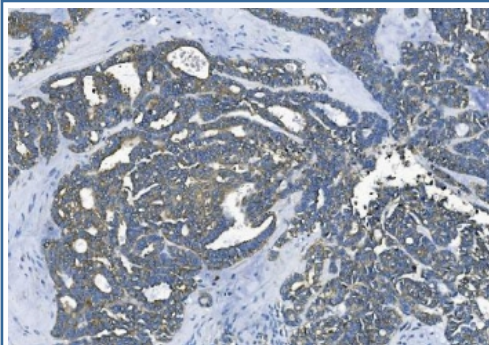
Western blot testing of 1) human Jurkat, 2) monkey COS-7 and human 3) HeLa, 4) U-2 OS, 5) HEK293, 6) HepG2 and 7) placenta lysate with Elongation factor 2 antibody. Predicted molecular weight ~95 kDa.



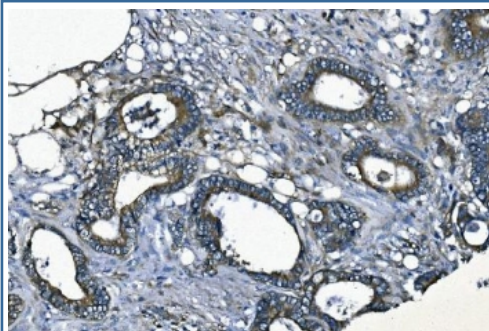
IHC staining of FFPE human gastric cancer with Elongation factor 2 antibody. HIER: boil tissue sections in pH8 EDTA for 20 min and allow to cool before testing.



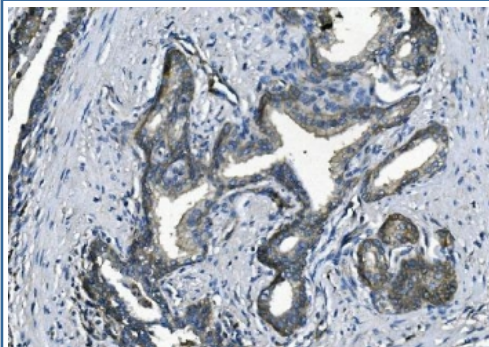
IHC staining of FFPE human ovarian cancer with Elongation factor 2 antibody. HIER: boil tissue sections in pH8 EDTA for 20 min and allow to cool before testing.



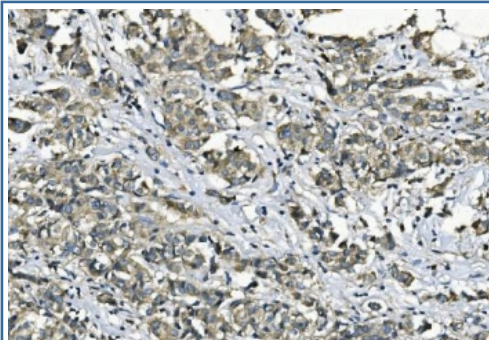
IHC staining of FFPE human ovarian cancer with Elongation factor 2 antibody. HIER: boil tissue sections in pH8 EDTA for 20 min and allow to cool before testing.



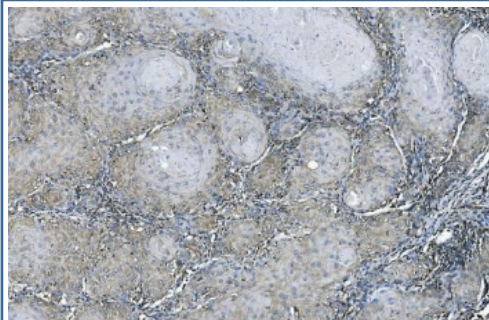
IHC staining of FFPE human rectal cancer with Elongation factor 2 antibody. HIER: boil tissue sections in pH8 EDTA for 20 min and allow to cool before testing.



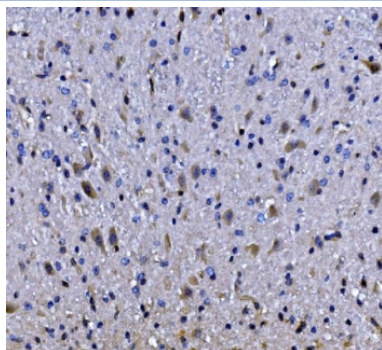
IHC staining of FFPE human prostate cancer with Elongation factor 2 antibody. HIER: boil tissue sections in pH8 EDTA for 20 min and allow to cool before testing.



IHC staining of FFPE human breast cancer with Elongation factor 2 antibody. HIER: boil tissue sections in pH8 EDTA for 20 min and allow to cool before testing.



IHC staining of FFPE human esophageal squamous carcinoma tissue with Elongation factor 2 antibody. HIER: boil tissue sections in pH8 EDTA for 20 min and allow to cool before testing.



IHC staining of FFPE mouse brain tissue with Elongation factor 2 antibody. HIER: boil tissue sections in pH8 EDTA for 20 min and allow to cool before testing.

## Description

Eukaryotic elongation factor 2 is a protein that in humans is encoded by the *EEF2* gene. This gene encodes a member of the GTP-binding translation elongation factor family. This protein is an essential factor for protein synthesis. It promotes the GTP-dependent translocation of the nascent protein chain from the A-site to the P-site of the ribosome. This protein is completely inactivated by EF-2 kinase phosphorylation.

## Application Notes

Optimal dilution of the Elongation factor 2 antibody should be determined by the researcher.

## Immunogen

Amino acids QTETVLRQAIAERIKPVLMMNKMDRALLELQLEPEELYQTFQR from the human protein were used as the immunogen for the Elongation factor 2 antibody.

## Storage

After reconstitution, the Elongation factor 2 antibody can be stored for up to one month at 4oC. For long-term, aliquot and store at -20oC. Avoid repeated freezing and thawing.