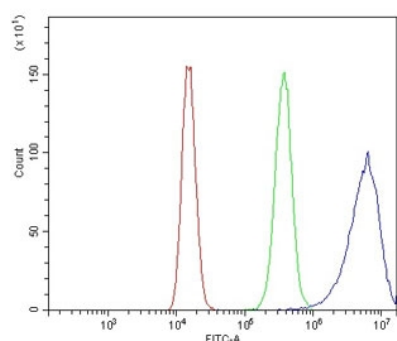


Complement C3 Antibody (RQ6122)

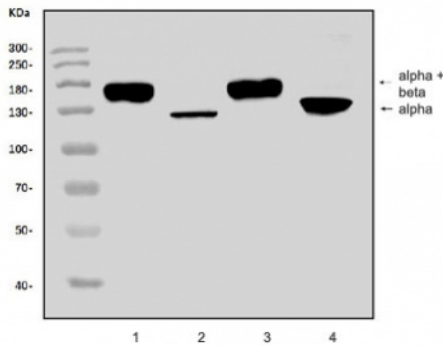
| Catalog No. | Formulation | Size |
|-------------|---|--------|
| RQ6122 | 0.5mg/ml if reconstituted with 0.2ml sterile DI water | 100 ug |

Bulk quote request

| | |
|---------------------------|--|
| Availability | 1-3 business days |
| Species Reactivity | Human, Mouse, Rat |
| Format | Antigen affinity purified |
| Clonality | Polyclonal (rabbit origin) |
| Isotype | Rabbit IgG |
| Purity | Affinity purified |
| Buffer | Lyophilized from 1X PBS with 2% Trehalose and 0.025% sodium azide |
| UniProt | P01024 |
| Applications | Western blot : 1-2ug/ml Flow cytometry : 1-3ug/million cells Direct ELISA : 0.1-0.5ug/ml |
| Limitations | This Complement C3 antibody is available for research use only. |



Flow cytometry testing of human 293T cells with Complement C3 antibody at 1ug/million cells (blocked with goat sera); Red=cells alone, Green=isotype control, Blue= Complement C3 antibody.



Western blot testing of 1) rat liver, 2) rat plasma, 3) mouse liver and 4) mouse plasma lysate with Complement C3 antibody. Expected molecular weight: ~185 kDa (alpha + beta chain), ~110 kDa (alpha chain), ~70 kDa (beta chain).

Description

Complement component C3 plays a central role in the activation of complement system. Its activation is required for both classical and alternative complement activation pathways. The encoded preproprotein is proteolytically processed to generate alpha and beta subunits that form the mature protein, which is then further processed to generate numerous peptide products. The C3a peptide, also known as the C3a anaphylatoxin, modulates inflammation and possesses antimicrobial activity. Mutations in this gene are associated with atypical hemolytic uremic syndrome and age-related macular degeneration in human patients.

Application Notes

Optimal dilution of the Complement C3 antibody should be determined by the researcher.

Immunogen

A human recombinant partial protein (amino acids Q1277-E1538) was used as the immunogen for the Complement C3 antibody.

Storage

After reconstitution, the Complement C3 antibody can be stored for up to one month at 4°C. For long-term, aliquot and store at -20°C. Avoid repeated freezing and thawing.