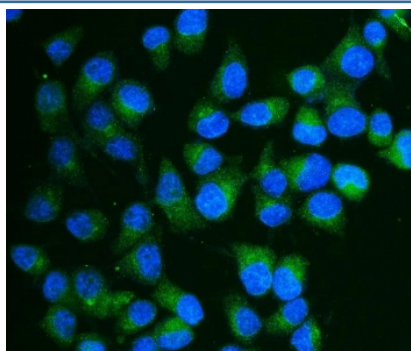


CA13 Antibody / Carbonic Anhydrase XIII (RQ6086)

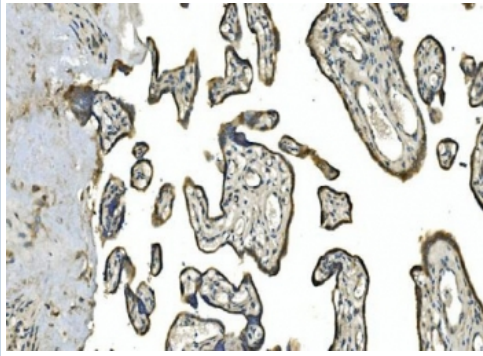
Catalog No.	Formulation	Size
RQ6086	0.5mg/ml if reconstituted with 0.2ml sterile DI water	100 ug

Bulk quote request

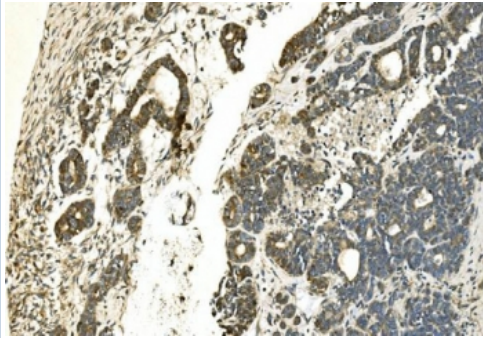
Availability	1-3 business days
Species Reactivity	Human, Mouse, Rat
Format	Antigen affinity purified
Clonality	Polyclonal (rabbit origin)
Isotype	Rabbit IgG
Purity	Affinity purified
Buffer	Lyophilized from 1X PBS with 2% Trehalose and 0.025% sodium azide
UniProt	Q8N1Q1
Localization	Cytoplasmic
Applications	Western blot : 1-2ug/ml Immunohistochemistry (FFPE) : 2-5ug/ml Flow cytometry : 1-3ug/million cells
Limitations	This CA13 antibody is available for research use only.



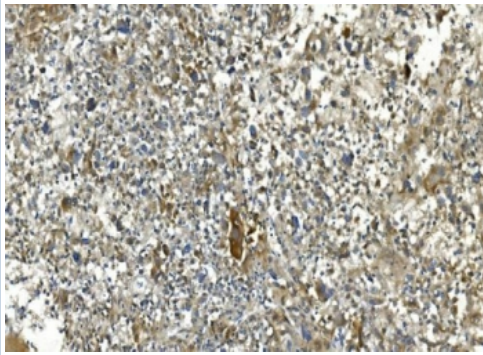
Immunofluorescent staining of FFPE human HepG2 cells with CA13 antibody (green) and DAPI nuclear stain (blue). HIER: steam section in pH6 citrate buffer for 20 min.



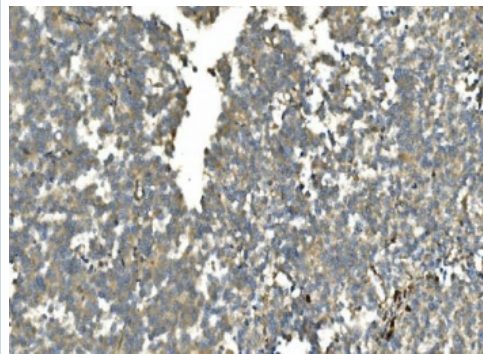
IHC staining of FFPE human placenta with CA13 antibody. HIER: boil tissue sections in pH8 EDTA for 20 min and allow to cool before testing.



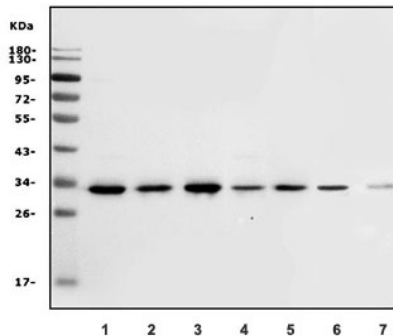
IHC staining of FFPE human ovarian cancer with CA13 antibody. HIER: boil tissue sections in pH8 EDTA for 20 min and allow to cool before testing.



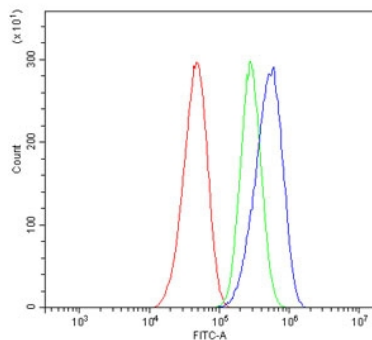
IHC staining of FFPE human liver cancer with CA13 antibody. HIER: boil tissue sections in pH8 EDTA for 20 min and allow to cool before testing.



IHC staining of FFPE human melanoma with CA13 antibody. HIER: boil tissue sections in pH8 EDTA for 20 min and allow to cool before testing.



Western blot testing of human 1) HepG2, 2) Caco-2, 3) U-87 MG, 4) K562, 5) HeLa, 6) rat intestine and 7) mouse NIH 3T3 lysate with CA13 antibody. Predicted molecular weight ~29 kDa.



Flow cytometry testing of human Caco-2 cells with CA13 antibody at 1ug/million cells (blocked with goat sera); Red=cells alone, Green=isotype control, Blue= CA13 antibody.

Description

Carbonic anhydrase 13 is a protein that in humans is encoded by the CA13 gene. Carbonic anhydrases (CAs) are a family of zinc metalloenzymes that catalyze the interconversion between carbon dioxide and water and the dissociated ions of carbonic acid (i.e. bicarbonate and hydrogen ions).

Application Notes

Optimal dilution of the CA13 antibody should be determined by the researcher.

Immunogen

Amino acids RLSWGYREHNGPIHWKEFFP from the human protein were used as the immunogen for the CA13 antibody.

Storage

After reconstitution, the CA13 antibody can be stored for up to one month at 4oC. For long-term, aliquot and store at -20oC. Avoid repeated freezing and thawing.