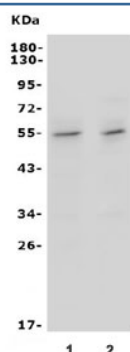


## Ifngr2 Antibody / IFN gamma Receptor beta (RQ5981)

Catalog No.	Formulation	Size
RQ5981	0.5mg/ml if reconstituted with 0.2ml sterile DI water	100 ug

**Bulk quote request**

<b>Availability</b>	1-3 business days
<b>Species Reactivity</b>	Mouse
<b>Format</b>	Antigen affinity purified
<b>Clonality</b>	Polyclonal (rabbit origin)
<b>Isotype</b>	Rabbit IgG
<b>Purity</b>	Affinity purified
<b>Buffer</b>	Lyophilized from 1X PBS with 2% Trehalose and 0.025% sodium azide
<b>UniProt</b>	Q63953
<b>Applications</b>	Western blot : 0.5-1ug/ml Direct ELISA : 0.1-0.5ug/ml
<b>Limitations</b>	This Ifngr2 antibody is available for research use only.



Western blot testing of mouse 1) thymus and 2) lung lysate with Ifngr2 antibody. Observed molecular weight: 37-55 kDa.

## Description

Interferon gamma receptor 2 also known as IFN-gR2 is a protein which in humans is encoded by the IFNGR2 gene. It is mapped to 16 C3.3; 16 53.07 cM. This gene (IFNGR2) encodes the non-ligand-binding beta chain of the gamma interferon receptor. Human interferon-gamma receptor is a heterodimer of IFNGR1 and IFNGR2. Defects in IFNGR2 are a cause of

mendelian susceptibility to mycobacterial disease (MSMD), also known as familial disseminated atypical mycobacterial infection. MSMD is a genetically heterogeneous disease with autosomal recessive, autosomal dominant or X-linked inheritance.

## Application Notes

Optimal dilution of the Ifngr2 antibody should be determined by the researcher.

## Immunogen

Recombinant mouse protein (amino acids A20-P332) was used as the immunogen for the Ifngr2 antibody.

## Storage

After reconstitution, the Ifngr2 antibody can be stored for up to one month at 4°C. For long-term, aliquot and store at -20°C. Avoid repeated freezing and thawing.