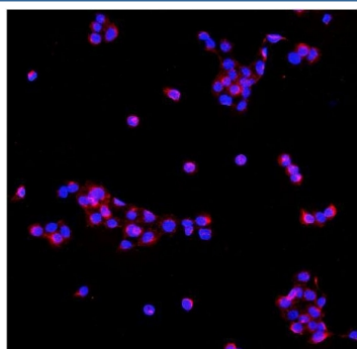


PDE6 beta Antibody / PDE6B (RQ5910)

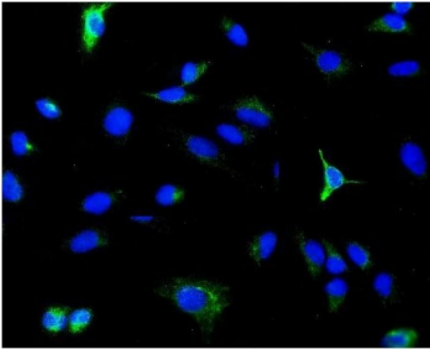
Catalog No.	Formulation	Size
RQ5910	0.5mg/ml if reconstituted with 0.2ml sterile DI water	100 ug

[Bulk quote request](#)

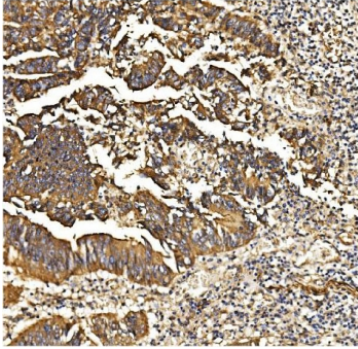
Availability	1-3 business days
Species Reactivity	Human, Mouse, Rat
Format	Antigen affinity purified
Clonality	Polyclonal (rabbit origin)
Isotype	Rabbit IgG
Purity	Affinity purified
Buffer	Lyophilized from 1X PBS with 2% Trehalose and 0.025% sodium azide
UniProt	P35913
Applications	Western blot : 0.5-1ug/ml Immunohistochemistry : 1-2ug/ml Immunofluorescence : 2-4ug/ml Direct ELISA : 0.1-0.5ug/ml
Limitations	This PDE6 beta antibody is available for research use only.



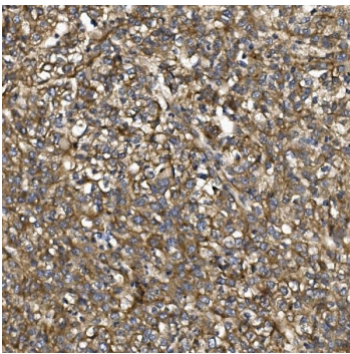
Immunofluorescent staining of FFPE human A431 cells with PDE6 beta antibody (red) and DAPI nuclear stain (blue). HIER: steam section in pH6 citrate buffer for 20 min.



Immunofluorescent staining of FFPE human A549 cells with PDE6 beta antibody (green) and DAPI nuclear stain (blue). HIER: steam section in pH6 citrate buffer for 20 min.



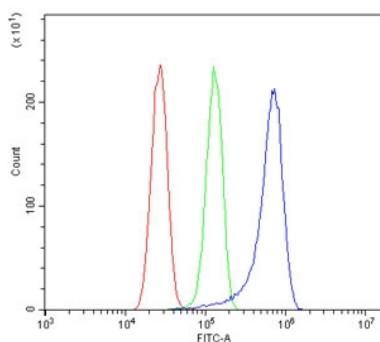
IHC staining of FFPE human rectal cancer with PDE6 beta antibody. HIER: boil tissue sections in pH8 EDTA for 20 min and allow to cool before testing.



IHC staining of FFPE human liver cancer with PDE6 beta antibody. HIER: boil tissue sections in pH8 EDTA for 20 min and allow to cool before testing.



Western blot testing of 1) rat eye and 2) mouse eye tissue with PDE6 beta antibody. Predicted molecular weight ~98 kDa.



Flow cytometry testing of human U-87 MG cells with PDE6 beta antibody at 1ug/million cells (blocked with goat sera); Red=cells alone, Green=isotype control, Blue= PDE6 beta antibody.

Description

Photon absorption triggers a signaling cascade in rod photoreceptors that activates cGMP phosphodiesterase (PDE), resulting in the rapid hydrolysis of cGMP, closure of cGMP-gated cation channels, and hyperpolarization of the cell. PDE is a peripheral membrane heterotrimeric enzyme made up of alpha, beta, and gamma subunits. This gene encodes the beta subunit. Mutations in this gene result in retinitis pigmentosa and autosomal dominant congenital stationary night blindness. Multiple transcript variants encoding different isoforms have been found for this gene.

Application Notes

Optimal dilution of the PDE6 beta antibody should be determined by the researcher.

Immunogen

Recombinant human protein (amino acids K25-Q237) was used as the immunogen for the PDE6 beta antibody.

Storage

After reconstitution, the PDE6 beta antibody can be stored for up to one month at 4°C. For long-term, aliquot and store at -20°C. Avoid repeated freezing and thawing.