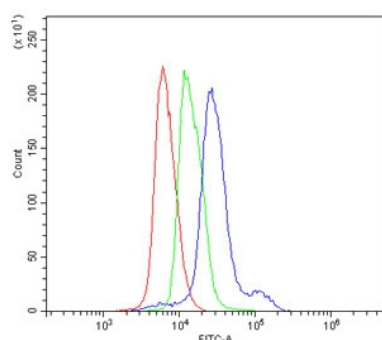


## Cd8a Antibody / CD8 alpha (RQ5874)

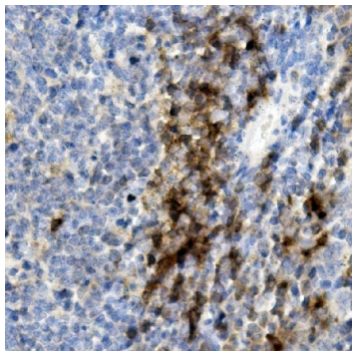
Catalog No.	Formulation	Size
RQ5874	0.5mg/ml if reconstituted with 0.2ml sterile DI water	100 ug

**Bulk quote request**

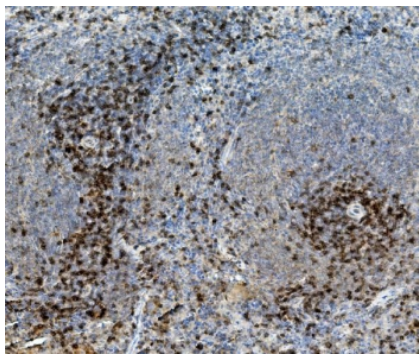
<b>Availability</b>	1-3 business days
<b>Species Reactivity</b>	Mouse, Rat
<b>Format</b>	Antigen affinity purified
<b>Clonality</b>	Polyclonal (rabbit origin)
<b>Isotype</b>	Rabbit IgG
<b>Purity</b>	Affinity purified
<b>Buffer</b>	Lyophilized from 1X PBS with 2% Trehalose and 0.025% sodium azide
<b>UniProt</b>	P01731
<b>Applications</b>	Western blot : 0.5-1ug/ml Immunohistochemistry : 1-2ug/ml Flow cytometry : 1-3ug/million cells Direct ELISA : 0.1-0.5ug/ml
<b>Limitations</b>	This Cd8a antibody is available for research use only.



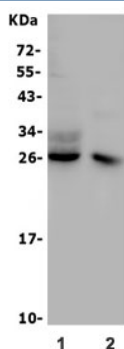
Flow cytometry testing of mouse spleen cells with Cd8a antibody at 1ug/million cells (blocked with goat sera); Red=cells alone, Green=isotype control, Blue= Cd8a antibody.



IHC staining of FFPE mouse spleen with Cd8a antibody. HIER: boil tissue sections in pH8 EDTA for 20 min and allow to cool before testing.



IHC staining of FFPE rat spleen with Cd8a antibody. HIER: boil tissue sections in pH8 EDTA for 20 min and allow to cool before testing.



Western blot testing of 1) rat thymus and 2) mouse thymus lysate with Cd8a antibody. Expected molecular weight: 26-40 kDa depending on glycosylation level.

## Description

The CD8 antigen is a cell surface glycoprotein found on most cytotoxic T lymphocytes that mediates efficient cell-cell interactions within the immune system. It is mapped to 2p11.2. The CD8 antigen, acting as a coreceptor, and the T-cell receptor on the T lymphocyte recognize antigen displayed by an antigen presenting cell (APC) in the context of class I MHC molecules. The functional coreceptor is either a homodimer composed of two alpha chains, or a heterodimer composed of one alpha and one beta chain. Both alpha and beta chains share significant homology to immunoglobulin variable light chains. This gene also encodes the CD8 alpha chain isoforms.

## Application Notes

Optimal dilution of the Cd8a antibody should be determined by the researcher.

## Immunogen

Recombinant mouse protein (amino acids K39-K245) was used as the immunogen for the Cd8a antibody.

## Storage

After reconstitution, the Cd8a antibody can be stored for up to one month at 4°C. For long-term, aliquot and store at -20°C.

Avoid repeated freezing and thawing.

Ordering: Phone: 858.663.9055 | Fax: 1.267.821.0800 | Email: [info@nsjbio.com](mailto:info@nsjbio.com)

Copyright © NSJ Bioreagents. All rights reserved