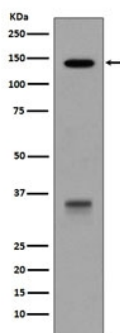


LDLR Antibody / LDL Receptor [clone BFC-12] (RQ4868)

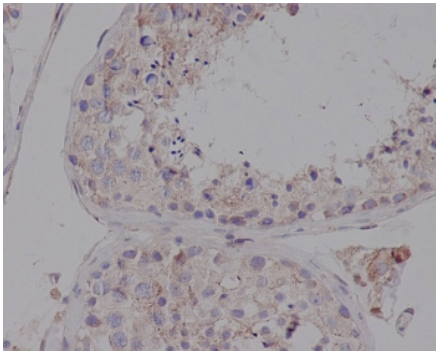
| Catalog No. | Formulation | Size |
|-------------|--|--------|
| RQ4868 | Antibody in PBS with 0.02% sodium azide, 50% glycerol and 0.4-0.5mg/ml BSA | 100 ul |

Bulk quote request

| | |
|---------------------------|--|
| Availability | 1-2 weeks |
| Species Reactivity | Human |
| Format | Purified |
| Clonality | Rabbit Monoclonal |
| Isotype | Rabbit IgG |
| Clone Name | BFC-12 |
| Purity | Affinity purified |
| UniProt | P01130 |
| Localization | Cell membrane, cytoplasmic |
| Applications | Western blot : 1:1000-1:2000 Immunohistochemistry (FFPE) : 1:50-1:200 |
| Limitations | This LDLR antibody is available for research use only. |



Western blot testing of human HepG2 cell lysate with LDLR antibody. Expected molecular weight: 95-160 kDa depending on glycosylation level.



IHC staining of FFPE human testis tissue with LDLR antibody. HIER: boil tissue sections in pH6, 10mM citrate buffer, for 10-20 min and allow to cool before testing.

Application Notes

Optimal dilution of the LDLR antibody should be determined by the researcher.

Immunogen

A synthetic peptide specific to human LDL Receptor / LDLR was used as the immunogen for the LDLR antibody.

Storage

Store the LDLR antibody at -20oC.